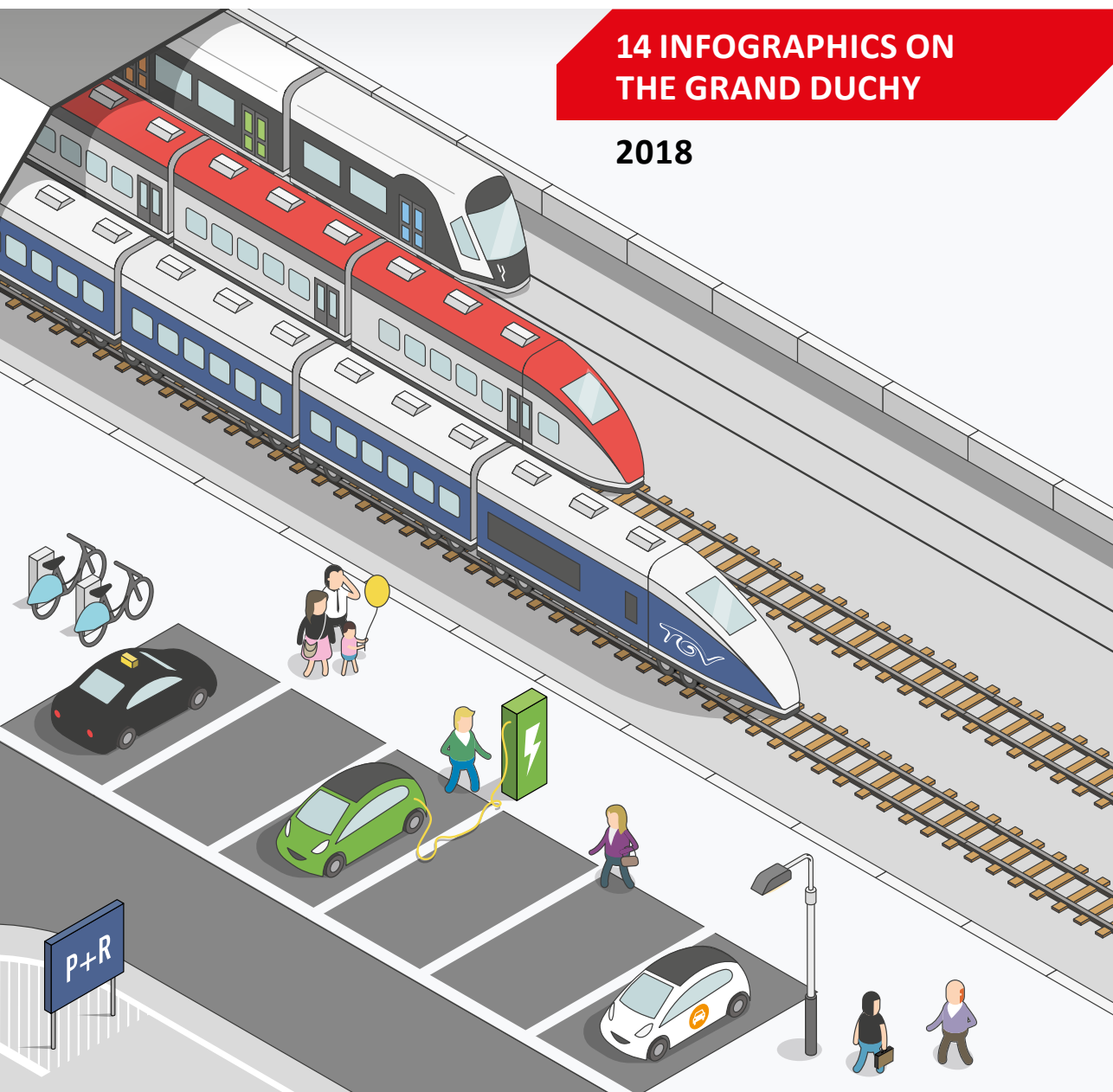




LET'S MAKE IT HAPPEN

**14 INFOGRAPHICS ON
THE GRAND DUCHY**

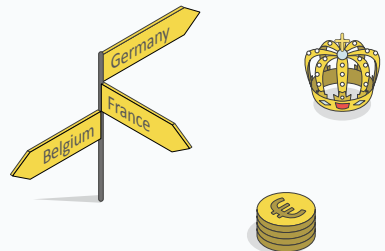
2018

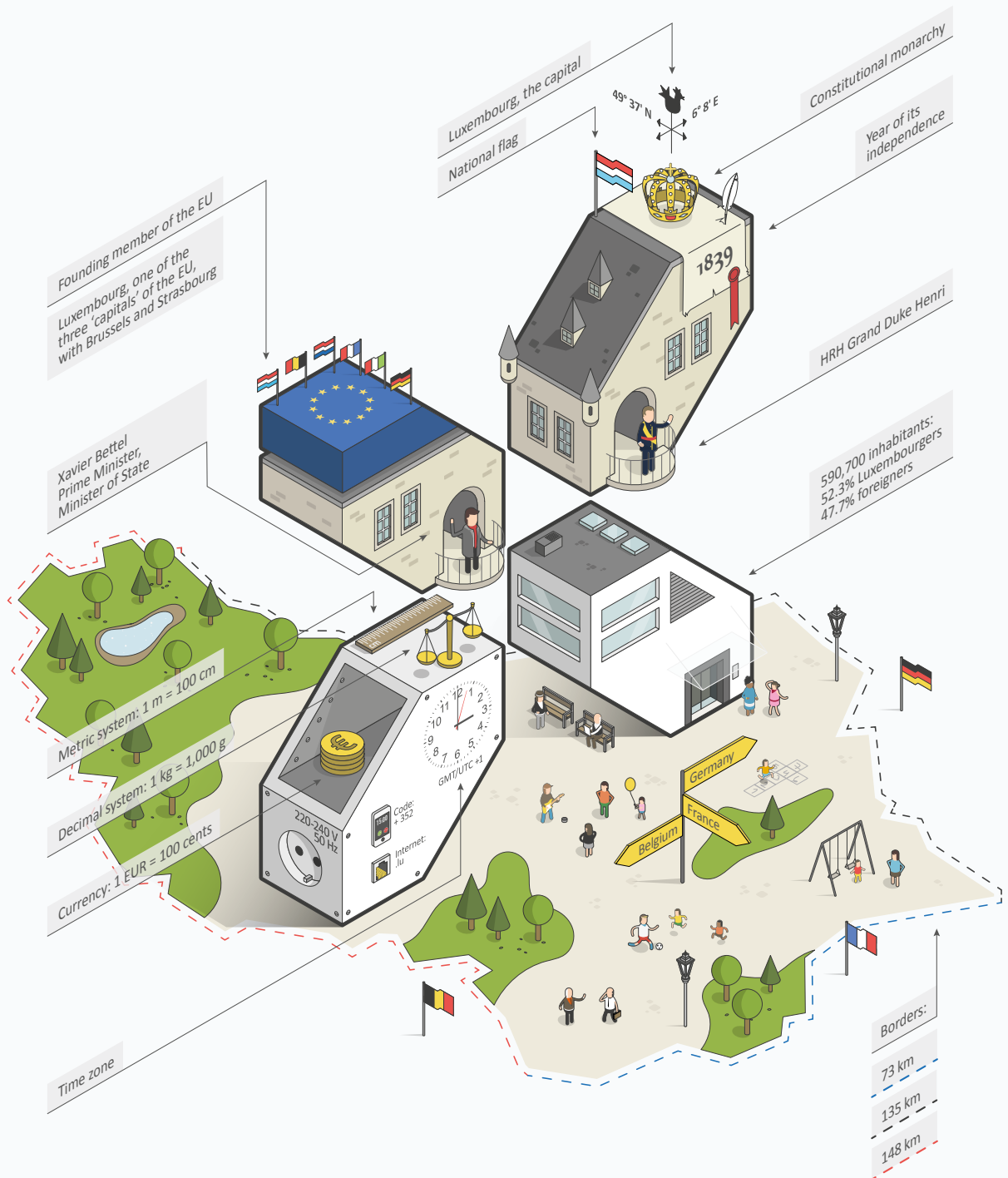


Contents

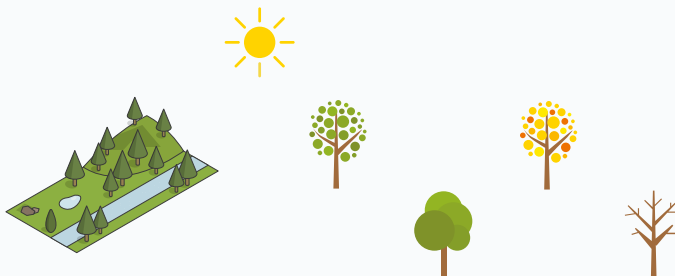
✂ At a glance	2
✂ Climate, territory and geography	4
✂ Multicultural population	6
✂ History	8
✂ Linguistic situation	10
✂ National symbols	12
✂ Culture and traditions	14
✂ Politics and institutions	16
✂ Economy and key economic sectors	18
✂ Import and export	20
✂ Labour market	22
✂ Mobility	24
✂ Quality of life	26
✂ Luxembourg in the world	28

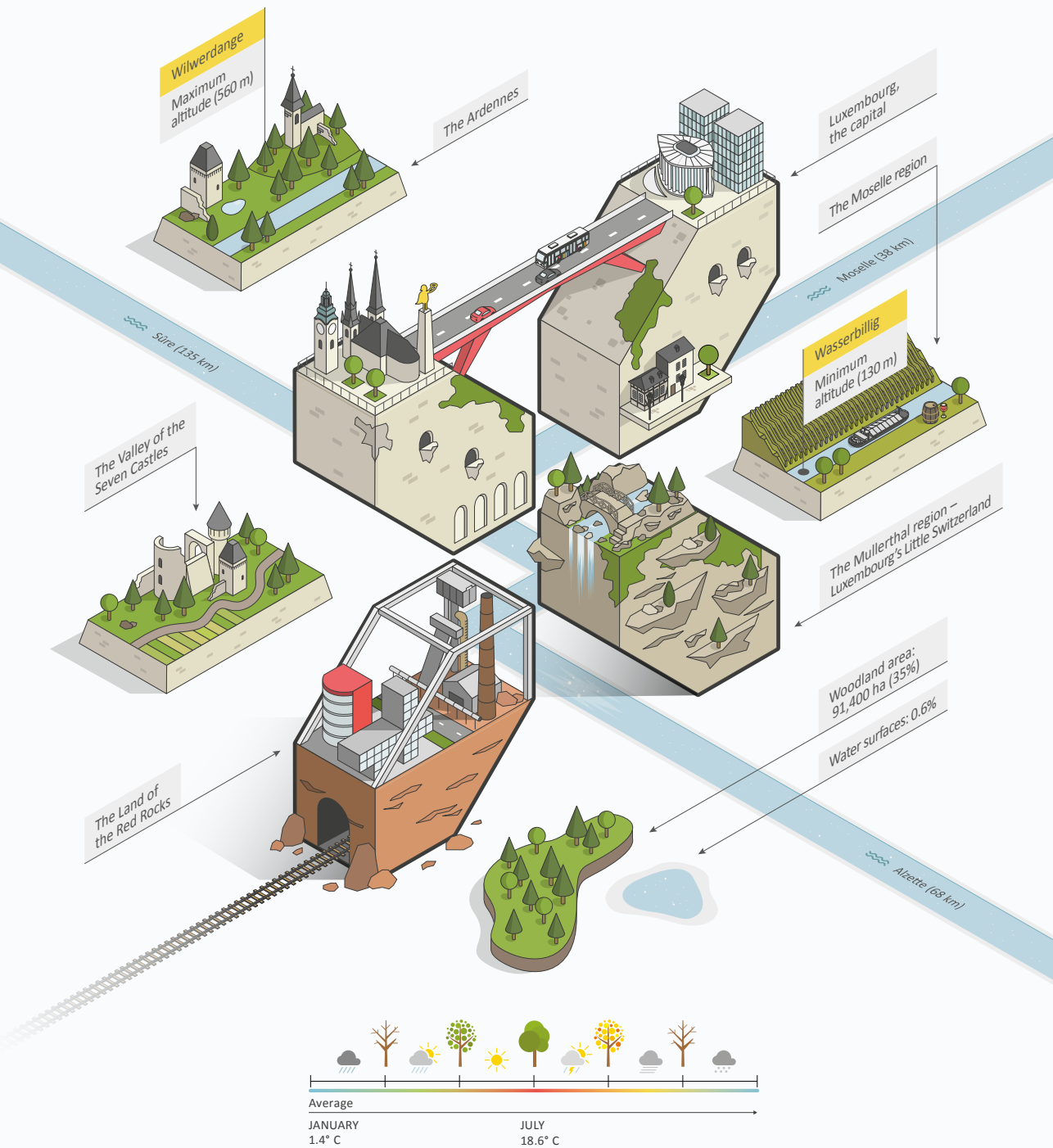
At a glance



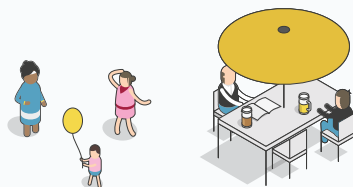


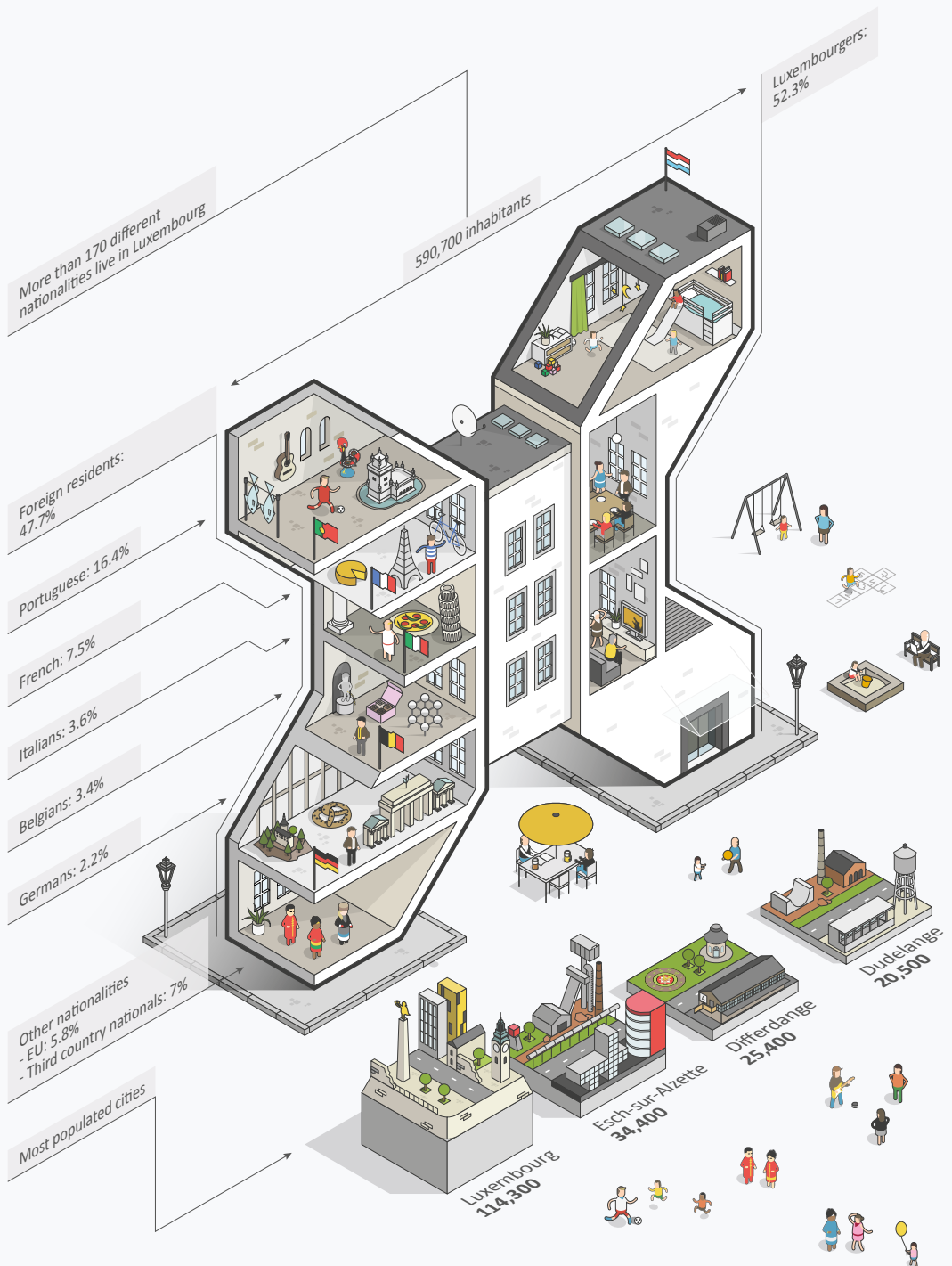
Climate, territory and geography



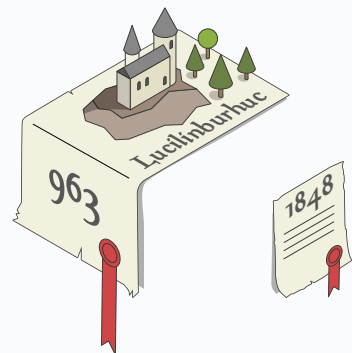


Multicultural population





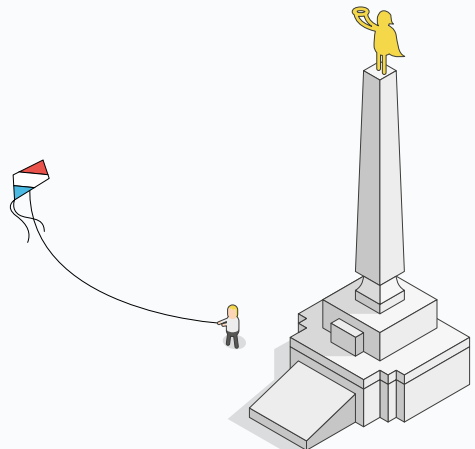
History



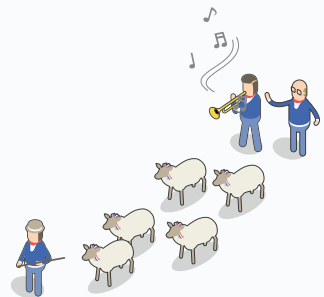
Linguistic situation

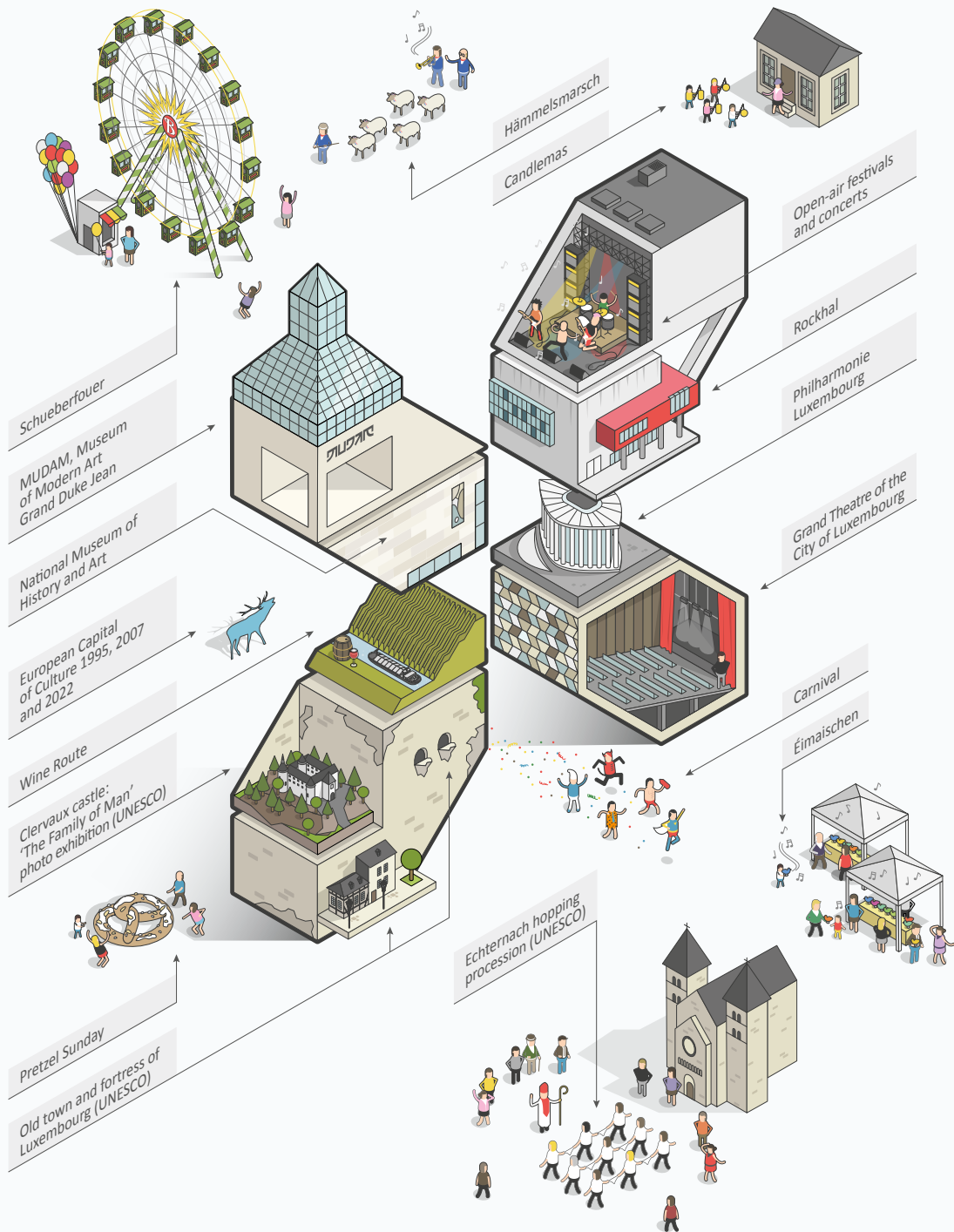


National symbols

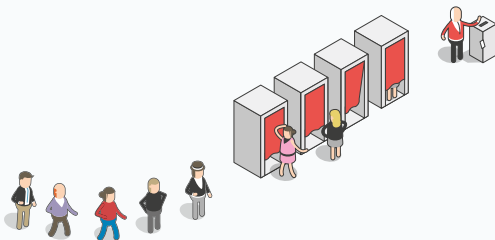


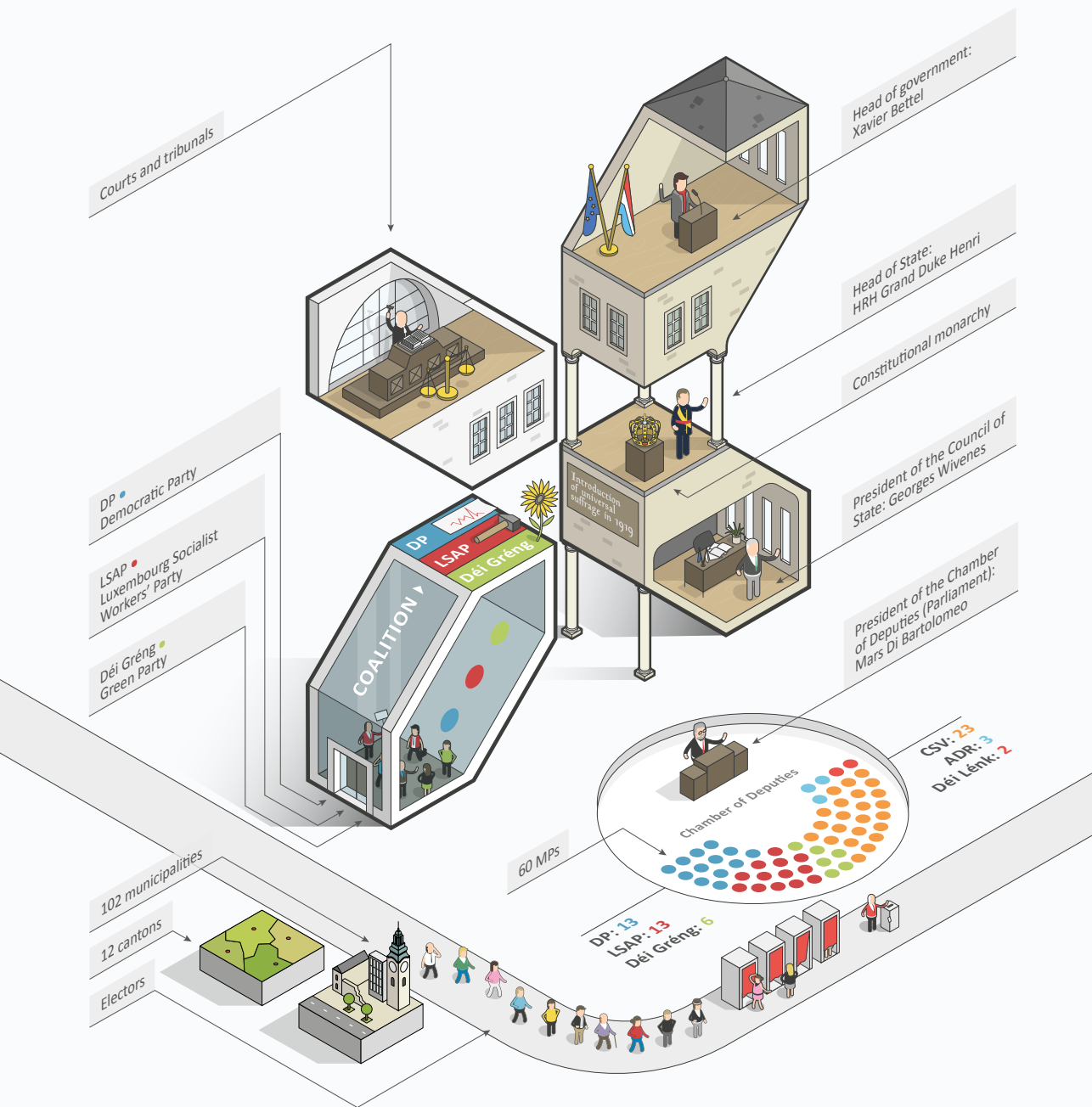
Culture and traditions



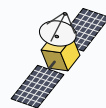


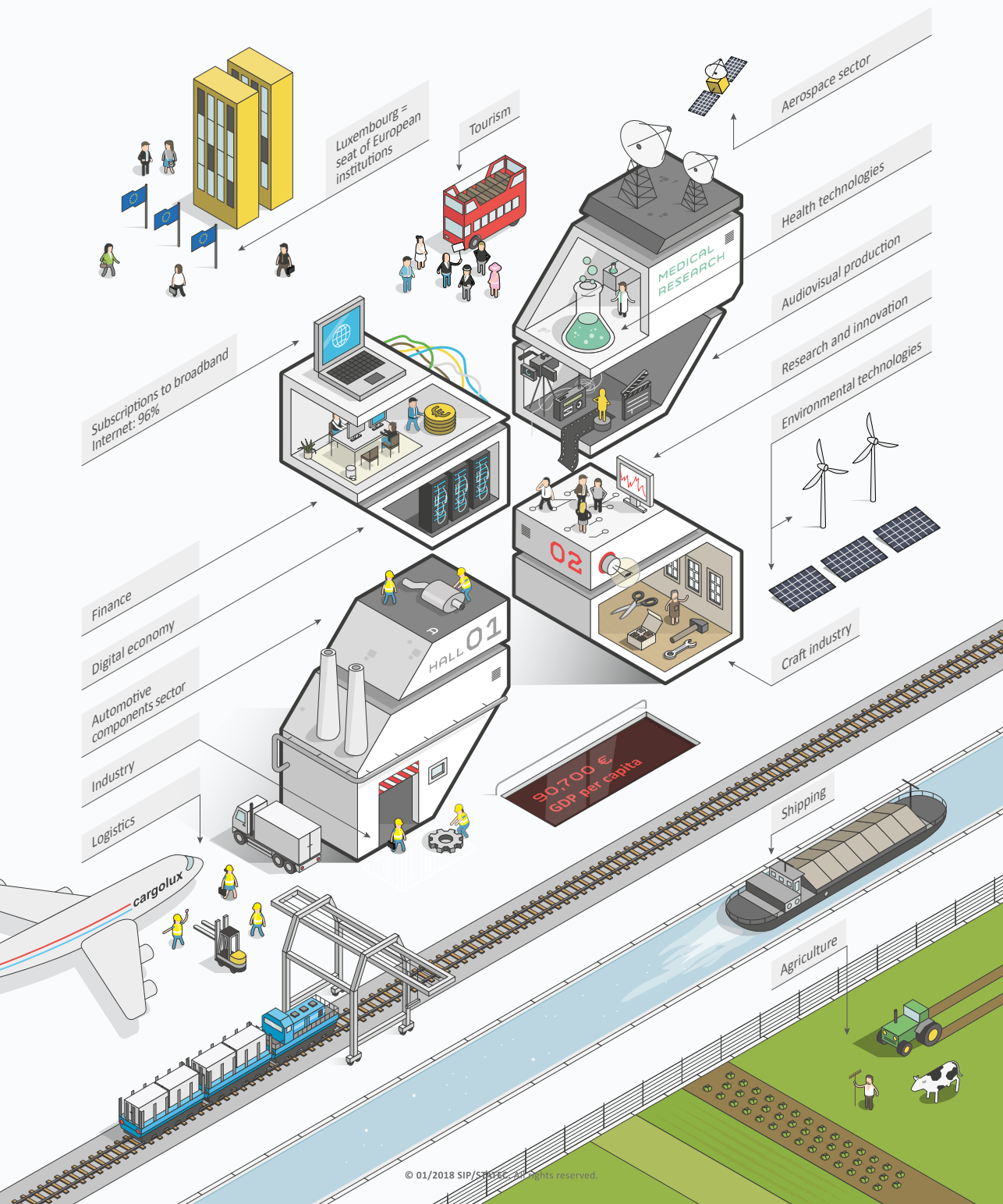
Politics and institutions



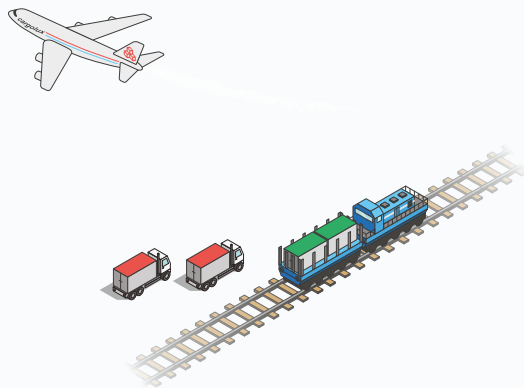


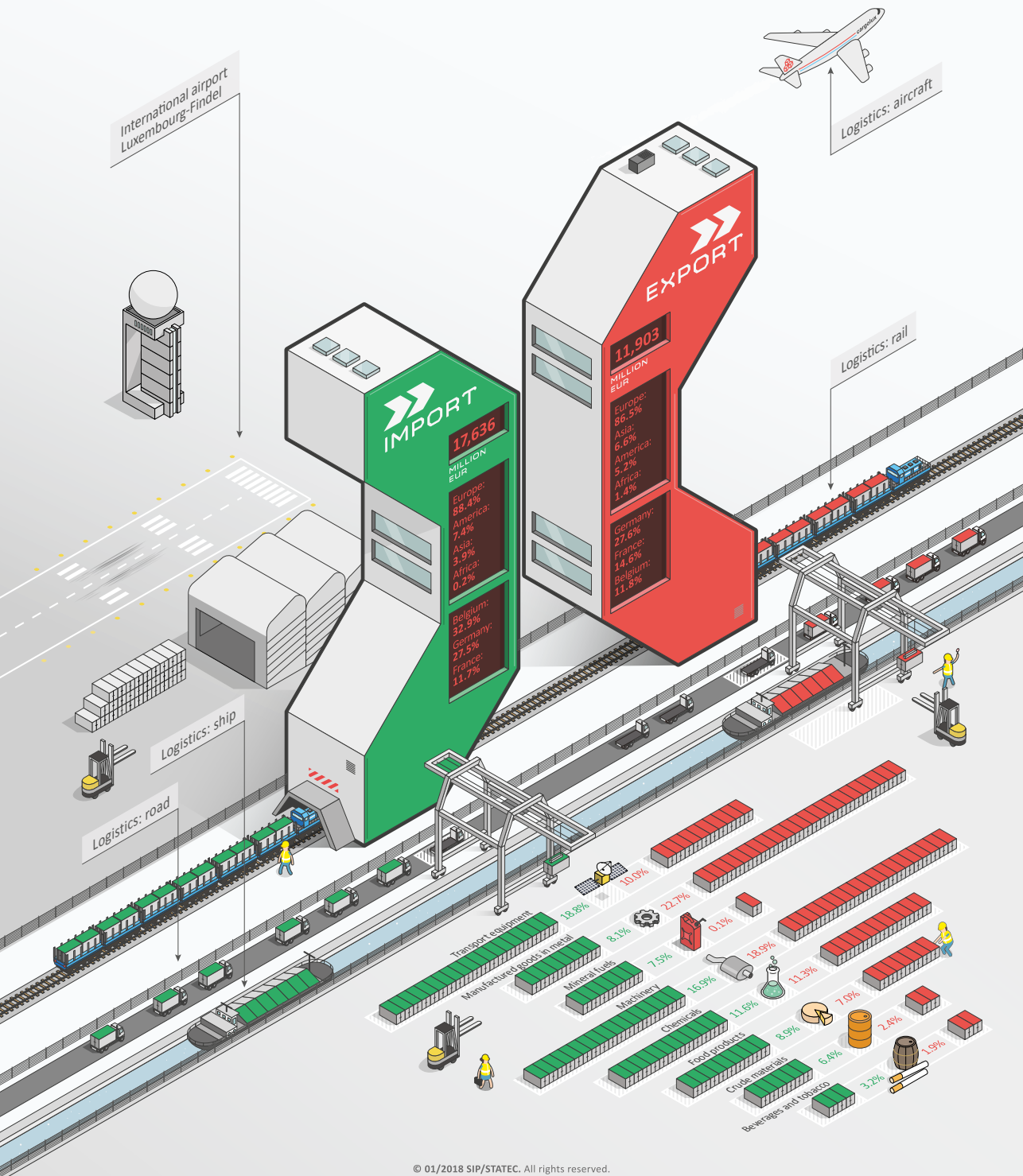
Economy and key economic sectors



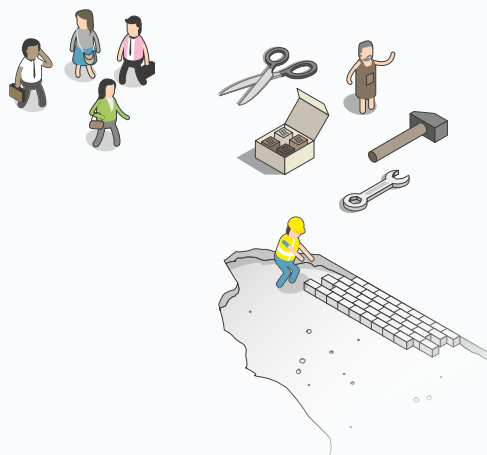


Import and export





Labour market





177,000 incoming commuters

France
Germany
Belgium

393,000 employees
Employment rate
(15-64 years): 66%

Industry

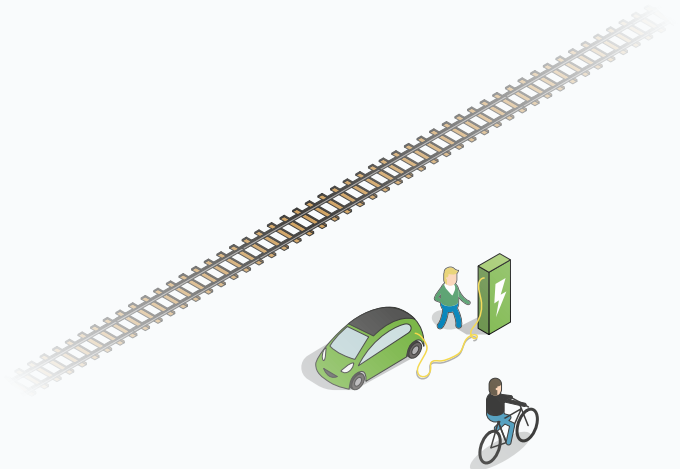
Craft industry

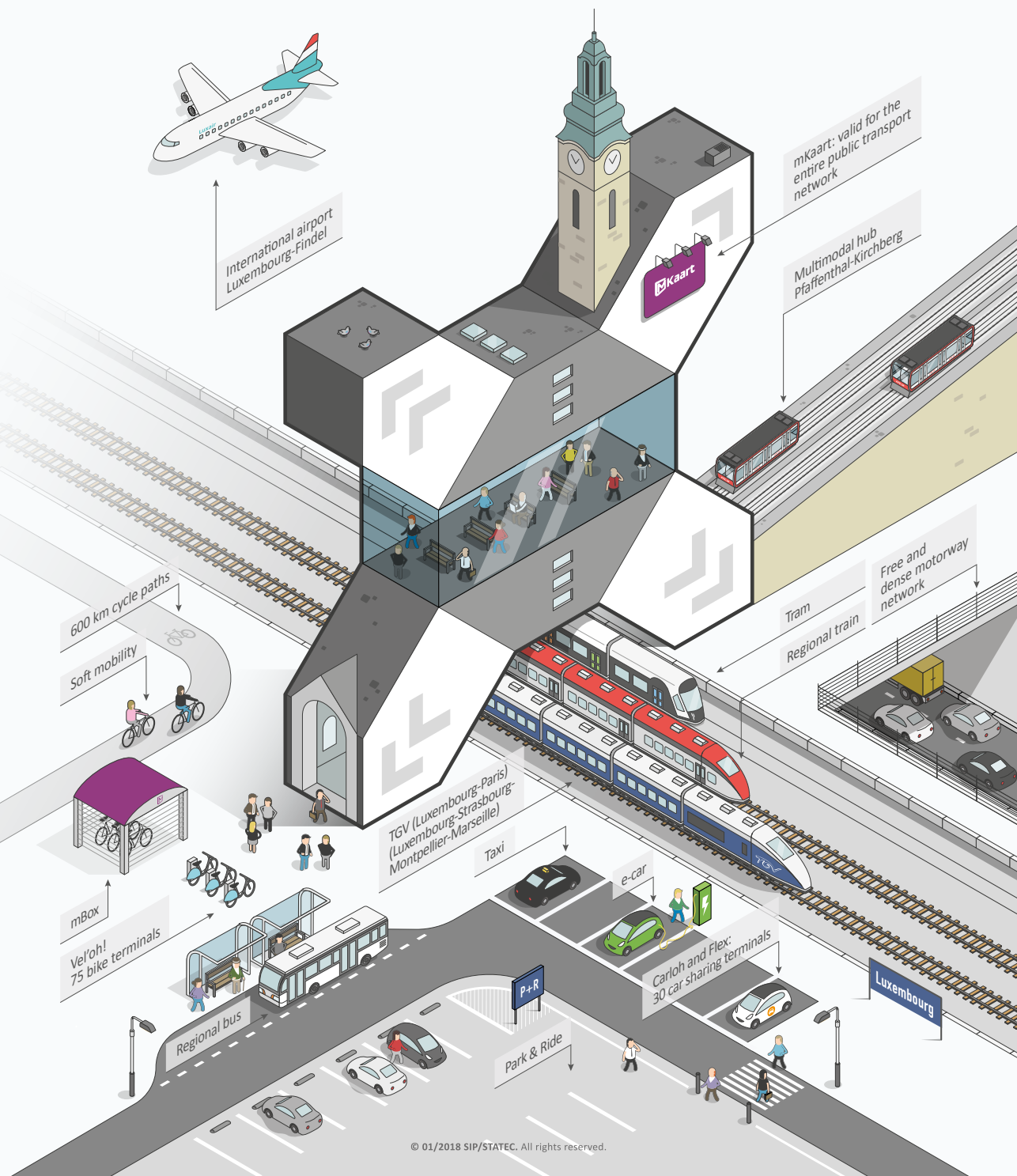
FINANCE
COMMERCE
ADMINISTRATION
SOCIAL SERVICES
INTERNATIONAL

73% foreigners employed
on the domestic labour
market

Unemployment rate: 6.4%

Mobility





International airport
Luxembourg-Findel

mKaaart: valid for the
entire public transport
network

Multimodal hub
Pfaffenthal-Kirchberg

Tram
Regional train

Free and dense motorway
network

TGV (Luxembourg-Paris)
(Luxembourg-Strasbourg-
Montpellier-Marseille)

Taxi

e-car

Carlo and Flex:
30 car sharing terminals

Luxembourg

Park & Ride

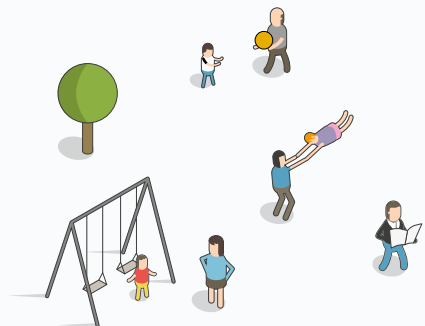
Regional bus

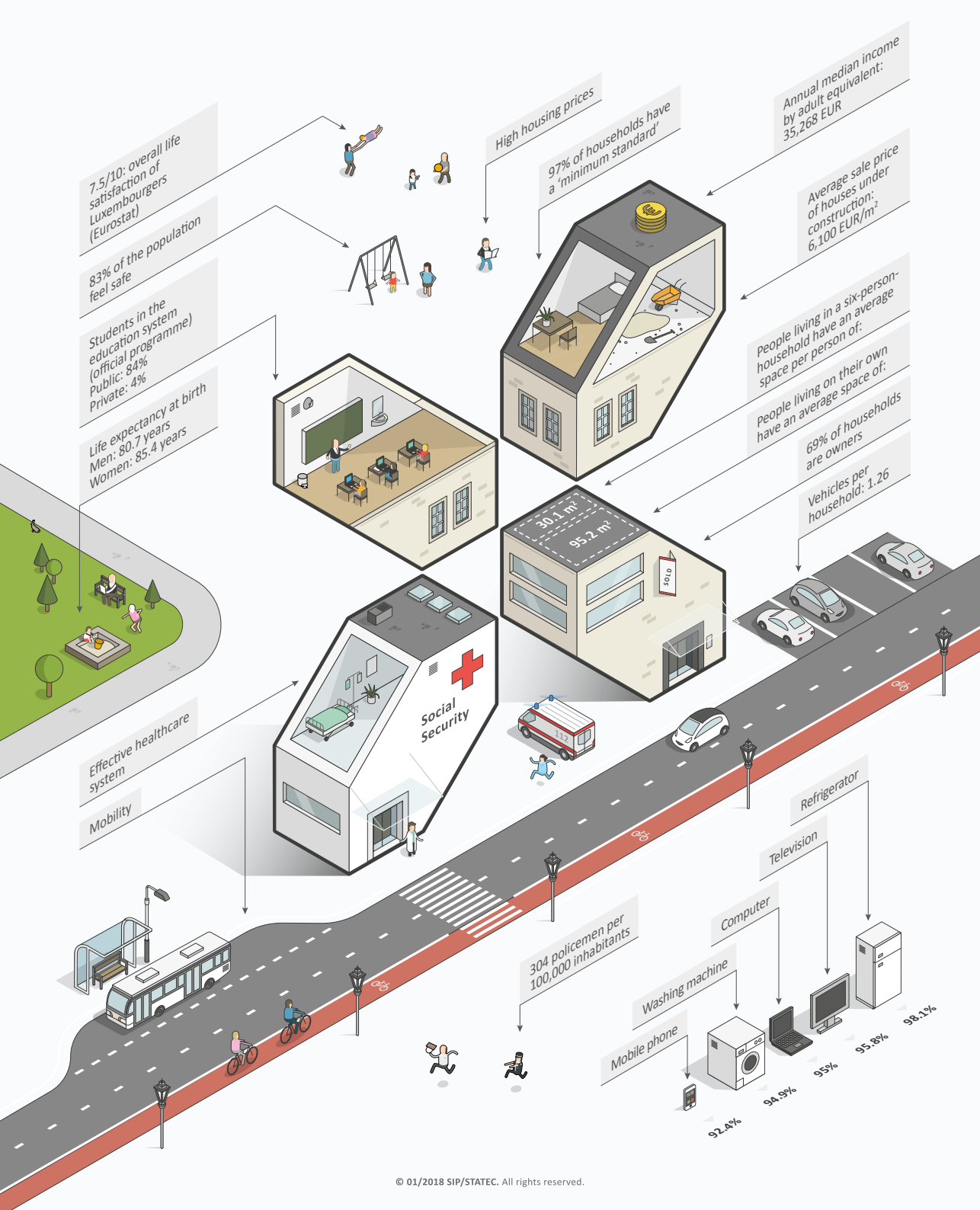
mBox
Vel'oh!
75 bike terminals

Soft mobility

600 km cycle paths

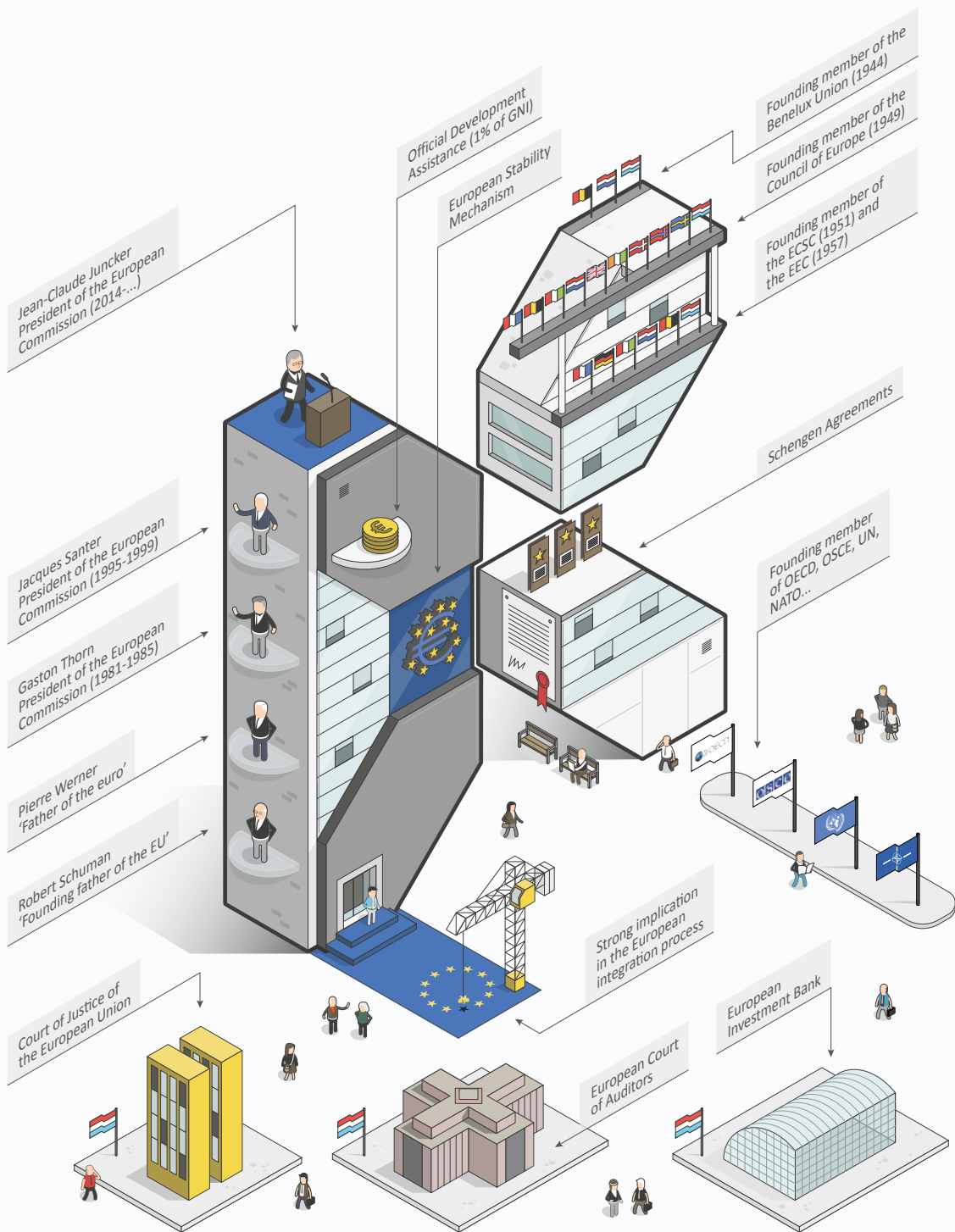
Quality of life





Luxembourg in the world





Publisher

Information and Press Service of the Luxembourg Government,
in collaboration with the National Institute of Statistics and
Economic Studies

Layout

Human Made

Printing

Imprimerie Centrale

ISBN 978-2-87999-283-9

December 2017



LE GOUVERNEMENT
DU GRAND-DUCHÉ DE LUXEMBOURG
Service information et presse

STATEC

Institut national de la statistique
et des études économiques