



# LUXEMBOURG IN FIGURES

—

## 2018

STATEC

## CONTENTS

### TERRITORY & ENVIRONMENT

- 2
- 3 Territory & Climate
- 5 Environment & Energy

### POPULATION & LABOUR MARKET

- 9
- 9 Population
- 13 Labour Market

### SOCIAL CONDITIONS

- 15
- 15 Social life
- 17 Social security & Health
- 18 Accidents
- 19 Crime
- 19 Education
- 20 Politics
- 21 Culture & Travelling

### ENTERPRISES

- 23
- 23 Demography & Structure
- 25 Agriculture, Forestry & Wine-growing
- 27 Industry & Construction
- 29 Tourism
- 30 Transport
- 32 Financial services
- 34 Sciences & Technology

### ECONOMY & FINANCES

- 35
- 35 National accounts & Public finances
- 38 External trade
- 42 Prices & Inflation
- 45 International comparison



# TERRITORY & ENVIRONMENT

## The 12 cantons of Luxembourg



# Territory

## Geographical survey

<b>Total area of the Grand Duchy</b>	<b>2,586 km<sup>2</sup></b>	<b>100%</b>
Area of the two natural regions		
in the north: Éislek (Oesling)	828 km <sup>2</sup>	32%
in the south: Guttland (Good country)	1,758 km <sup>2</sup>	68%

<b>Dimensions</b>	<b>North-South</b>	<b>East-West</b>
Maximum	82 km	57 km

## Length of the border

Total length	356 km
with France	73 km
with Germany	135 km
with Belgium	148 km

## Altitudes

Maximum (Wilwerdange)	560 m
Minimum (Wasserbillig)	130 m
Luxembourg-City	300 m

## Land use in 2017



Road-net, railway network, etc.

4.5%



Watercourses and waterbody

0.6%



Agricultural and wooded area

85.1%



Built-up area

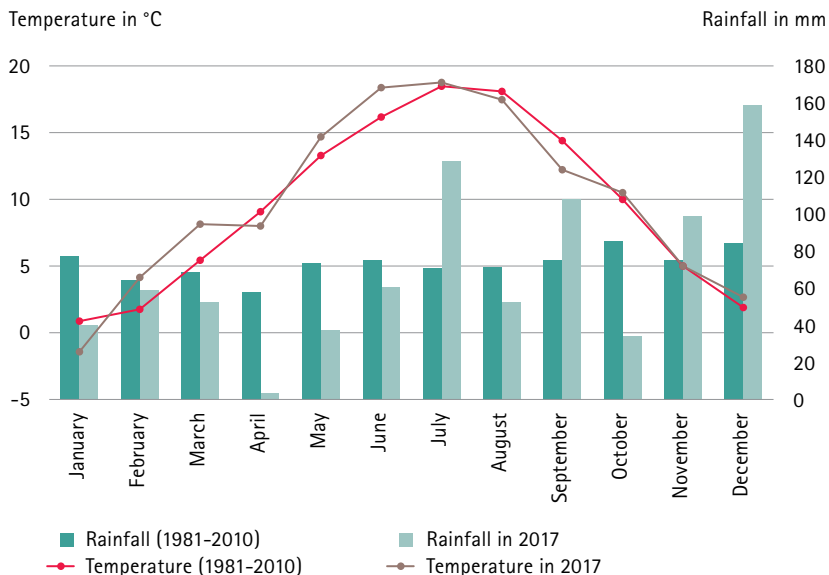
9.8%



# Climate

Luxembourg-City	January	April	July	October	12 months
Average 1981-2010					
Temperature (in °C)					
Average	1.4	8.9	18.6	9.7	9.6
Maximum	11.3	22.9	32.7	21.7	21.9
Minimum	-10.1	-3.0	6.8	-1.4	-2.0
Relative humidity (in %)	86.9	71.7	71.0	85.0	79.1
Hours of sunshine	45.7	166.9	229.8	100.2	1,568.1

## Rainfalls and temperatures in Luxembourg-City



# Environment

Air pollution	EU Norm	2010	2016	2017
Protection of the human health		Highest recorded value		
Nitrogen dioxide (NO <sub>2</sub> )	40 <sup>1</sup>	59	45	45
Nitrogen oxides (NO <sub>x</sub> =NO+NO <sub>2</sub> , in rural area)	30 <sup>1</sup>	21	20	16
Particulate matter (PM <sub>10</sub> , <10 µm)	40 <sup>1</sup>	25	21	24
Ozone (O <sub>3</sub> )	180 <sup>2,3</sup> / 240 <sup>2,4</sup>	202	188	245
Carbon monoxide (CO)	10,000 <sup>5</sup>	1,020	1,820	1,140

<sup>1</sup> annual average

<sup>2</sup> hourly average

<sup>3</sup> information threshold for the population (1 hour)

<sup>4</sup> alert threshold (3 consecutive hours)

<sup>5</sup> average over 8 hours

## Status of water bodies in 2015

### Ecological status



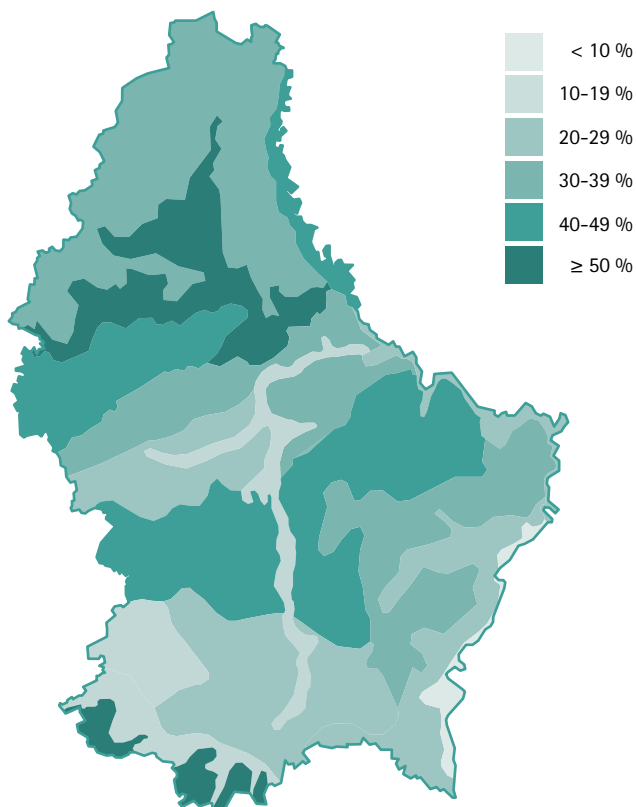
### Chemical status (not good)



### Hydromorphological status



■ good
 ■ moderate
 ■ poor
 ■ bad



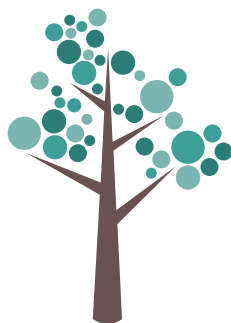
Forest	2000	2010	2000	2010
	in hectares		in %	
Wooded land	91,450	91,400	100.0	100.0
Public forest	40,950	42,000	44.8	46.0
Private forest	50,500	49,400	55.2	54.0



Trees considerably damaged

2000  
**23.4%**

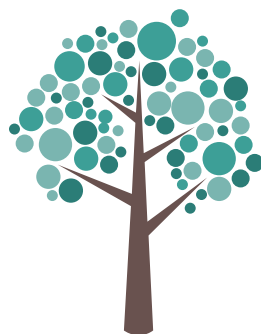
2016  
**38.3%**



Trees slightly damaged

2000  
**33.0%**

2016  
**33.1%**



Trees with no damage

2000  
**43.6%**

2016  
**28.6%**

## Wastes collected and treated

	2000	2010	2015	2016
	in 1,000 tonnes			
Total (without inert wastes)	285.26	344.26	345.95	354.62
of which: Household wastes	238.85	300.01	305.59	310.89
	in %			
recycling	21.6	26.9	29.2	27.8
composting	14.2	19.5	18.3	20.7
incineration with energy recovery	43.2	37.7	45.1	45.3
disposal	21.0	15.8	7.4	6.3
	in kg			
Household wastes per capita	547	592	536	533



# Energy

Final consumption of energy	2010	2015	2016	2016
	in 1,000 tons oil equivalent			in % of the total
<b>By product</b>				
Coal products	67	49	52	1.3
Natural gas (NCV)	675	597	628	15.5
Electricity	567	535	547	13.5
Heat	73	56	58	1.4
Oil products	2,838	2,601	2,595	64.2
Other (wood, biofuel)	108	151	160	4.0
<b>By use</b>				
Transport	2,628	2,432	2,436	60.3
Industries	756	639	674	16.7
Households	511	510	494	12.2
Services	423	403	432	10.7
Agriculture	8	6	6	0.2
<b>Total</b>	<b>4,327</b>	<b>3,990</b>	<b>4,042</b>	<b>100.0</b>



# POPULATION & EMPLOYMENT

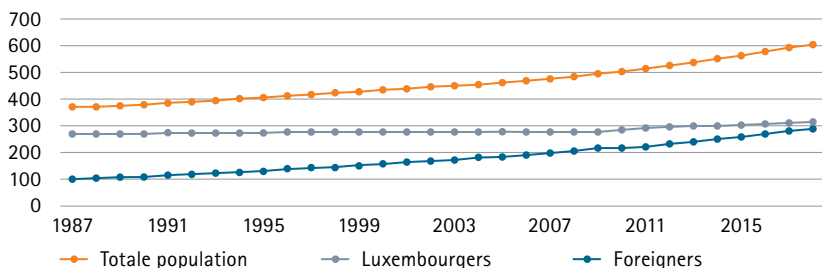
## Population structure

Population censuses	1991	2001	2011	2018 <sup>1</sup>
	x 1,000			
<b>Total population</b>	<b>384.4</b>	<b>439.5</b>	<b>512.4</b>	<b>602.0</b>
of which: Women	196.1	223.0	257.4	299.4
Luxembourgers	271.4	277.2	291.9	313.8
Foreigners	113.0	162.3	220.5	288.2
of which: Portuguese	39.1	58.7	82.4	96.5
French	13.0	20.0	31.5	45.8
Italians	19.5	19.0	18.1	22.0
Belgians	10.1	14.8	16.9	20.2
Germans	8.8	10.1	12.0	13.1
Other EU countries	13.3	17.2	30.9	46.7
Other	9.2	22.5	28.7	43.8
Foreigners in %	29.4	36.9	43.0	47.9

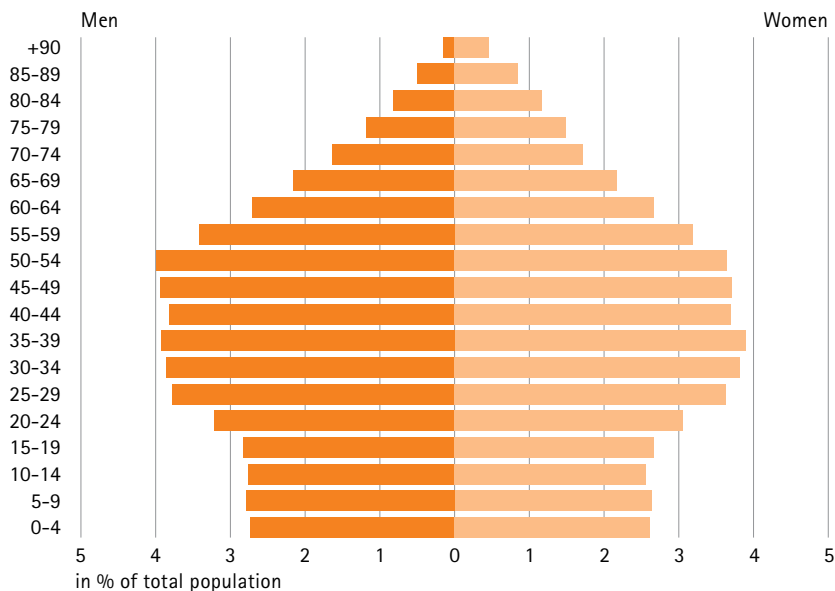
<sup>1</sup> based on the population register on 1st January

## Evolution of total, luxembourgish and foreign population

in 1,000 inhabitants



## Total population by age group on January 1st, 2018



Life expectancy	1990/92	2000/02	2010/12	2015/17
	Age			
Males	72.6	74.8	78.6	79.9
Females	79.1	81.0	83.4	84.4

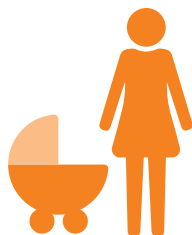
Population by age groups	1991	2001	2011	2018 <sup>1</sup>
	in %			
Working age (15 to 64 years)	68.4	67.2	68.7	69.5
of which: Women (15 to 64 years)	33.7	33.2	33.8	34.0
Children (0 to 14 years)	17.3	18.9	17.3	16.1
of which: Girls (0 to 14 years)	8.4	9.2	8.4	7.8
Third age (65 years and more)	14.3	13.9	14.0	14.3
of which: Women (65 years and more)	8.2	8.3	8.0	7.9

<sup>1</sup> based on the population register on 1st January

Population movement	2000	2010	2016	2017
Live births	5,723	5,874	6,050	6,174
of which: Girls	2,745	2,914	2,973	3,003
Luxembourgers	2,917	3,029	3,123	3,277
Foreigners	2,806	2,845	2,927	2,897
Births per 1,000 inhabitants	13.1	11.6	10.4	10.3
Luxembourgers	10.6	10.5	10.1	10.4
Foreigners	17.3	13.0	10.6	10.1
Total fertility rate	1.78	1.63	1.40	1.39
Deaths	3,749	3,760	3,967	4,263
of which: Women	1,859	1,857	1,927	2,132
Luxembourgers	3,202	3,049	3,070	3,284
Foreigners	547	711	897	979
Deaths by some main causes				
Diseases of the circulatory system	1,442	1,256	1,264	...
Neoplasms	991	1,061	1,121	...
Suicides	66	74	61	...
Deaths < 1 year	29	20	23	20
Rates per 1,000 live births	5.1	3.4	3.8	3.2
Natural increase	1,969	2,114	2,083	1,911
Luxembourgers	-290	-20	53	-7
Foreigners	2,259	2,134	2,030	1,918
Marriages	2,148	1,749	1,884	1,908
of which: Same sex marriages	-	-	65	42
Divorces	1,030	1,083	1,241	1,192
Naturalisations	684	4,311	7,140	9,030



Births  
in 2017  
**6 174**



Number of children  
per woman in 2017  
**1.4**

Mean age at birth  
of first child  
in 2017  
**30.6**



Deaths  
in 2017  
**4 263**

<b>The most populated municipalities</b>	1991	2001	2011	2018 <sup>1</sup>
				x 1,000
Luxembourg-City	75.8	76.7	95.1	116.3
Esch-sur-Alzette	24.0	27.2	30.1	35.0
Differdange	15.7	18.2	21.9	26.2
Dudelange	14.7	17.3	18.8	20.9
Pétange	12.4	13.7	16.1	18.7
Sanem	11.6	13.0	14.5	16.8
Hesperange	9.9	10.4	13.3	15.2
Bettembourg	8.0	9.1	9.8	11.0
Schifflange	6.9	7.8	8.9	10.8
Käerjeng	6.7	8.7	9.7	10.3

<sup>1</sup> based on the population register on 1st January

<b>Households, buildings</b>	1970	1991	2011	2017
				x 1,000
Private households	108.7	144.7	208.6	246.8
of which: Foreign households	17.7	39.9	88.9	...
Inhabited buildings <sup>1</sup>	80.9	105.8	130.1	142.8

<sup>1</sup> in 2017, estimate of the number of buildings (inhabited or not) on March 1st

<b>Asylum seekers</b>	2000	2010	2016	2017
Arrivals	627	796	2,035	2,322
of which: Syrians	2	10	289	368
Eritreans	-	11	106	224
Moroccans	-	4	75	205
Serbians	-	149	153	190
Algerians	9	44	75	169
Returns	...	202	502	411
of which: Forced	...	103	70	94

## Labour Market

Employment and unemployment	2000	2010	2016	2017
	x 1,000 (annual average)			
1. Domestic employment	264.0	359.6	418.4	432.4
Wage-earners	245.7	337.4	392.7	406.1
Employers, self-employed, unpaid family workers	18.3	22.1	25.8	26.3
2. Net borderers (a) - (b)	79.3	141.2	168.2	175.2
a. Non-resident borderers	88.1	152.4	180.7	188.1
Employers, self-employed, unpaid family workers	1.1	3.1	4.3	4.6
Wage-earners	87.0	149.3	176.4	183.5
of which from: France	46.5	74.1	88.6	92.9
Germany	16.4	37.5	44.1	45.5
Belgium	24.2	37.8	43.8	45.1
b. Resident borderers	8.8	11.2	12.5	12.9
of which: International agents and civil servants	7.8	10.1	11.0	11.0
3. National employment (1) - (2)	184.7	218.4	250.2	257.2
4. Unemployed	4.5	13.5	16.9	16.2
of which: Unemployed on the dole	2.0	7.3	8.3	8.2
5. Active population (3) + (4)	189.2	231.9	267.1	273.3
6. Unemployment rate in % (4) : (5)	2.4	5.8	6.3	5.9
7. Persons in job schemes	2.1	3.8	5.3	5.2

Domestic employment by branches	2000	2010	2016	2017
				x 1,000
Agriculture, forestry and fishing	4.3	4.0	3.7	3.7
Mining and quarrying	0.3	0.3	0.2	0.3
Manufacturing	34.0	32.7	32.3	32.6
Electricity, gas, steam and air conditioning supply	1.2	1.4	1.6	1.6
Water supply	2.1	2.6	2.7	2.7
Construction	28.6	39.0	42.8	44.1
Wholesale and retail trade; Repair of motor vehicles and motorcycles	37.2	44.7	50.9	52.1
Transportation and storage	17.5	24.2	25.4	26.2
Accommodation and food service activities	12.9	16.5	19.7	20.4
Information and communication	8.8	14.1	17.3	18.3
Financial and insurance activities	30.1	40.9	46.0	47.3
Real estate activities	1.4	2.9	4.0	4.2
Professional, scientific and technical activities	15.4	29.7	39.8	42.1
Administrative and support service activities	14.7	22.4	28.0	29.6
Public administration and defence	15.0	20.1	23.8	24.0
Education	11.7	16.5	19.0	19.2
Human health and social work activities	17.6	32.1	43.3	45.0
Arts, entertainment and recreation	2.1	3.4	4.1	4.2
Other service activities	5.2	7.1	8.1	8.8
Activities of households as employers; undifferentiated goods- and services-producing activities of households for own use	3.9	4.8	5.6	5.8
<b>Total</b>	<b>264.0</b>	<b>359.6</b>	<b>418.4</b>	<b>432.4</b>



# SOCIAL CONDITIONS

## Social life

Income and poverty	2003	2010	2015	2016
Disposable income			in EUR/month	
Mean disposable income per household	4,181	5,118	5,363	5,584
Mean disposable income per adult-equivalent	2,472	3,033	3,309	3,285
Median disposable income per household	3,532	4,350	4,514	4,666
Median disposable income per adult-equivalent	2,148	2,694	2,939	2,818
Indicators of poverty and income inequality				
At-risk-of-poverty threshold (in EUR)	1,289	1,617	1,763	1,691
At-risk-of-poverty rate (in %)	11.9	14.5	15.3	16.5

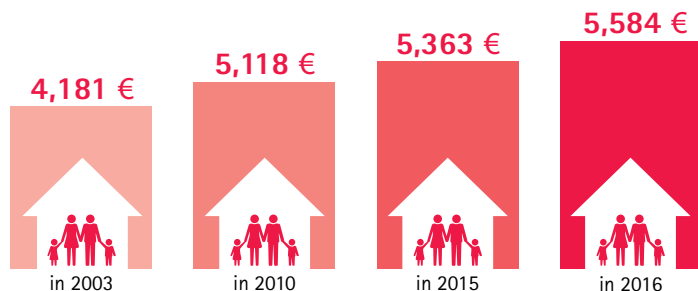
Wages	2005	2010	2015	2016
Average annual gross earnings by economic activity (Full time-workers)			in EUR	
Industry and services	43,769	51,315	57,730	58,181
Men	45,941	53,577	60,279	60,728
Women	38,874	46,543	52,660	53,125
Industry	40,488	46,314	50,342	50,391
Men	42,064	47,828	51,782	51,791
Women	31,810	37,540	42,291	42,557
Construction	31,468	36,179	40,107	40,511
Men	31,419	36,050	39,882	40,274
Women	32,336	38,049	43,297	43,691
Services	46,397	54,348	61,287	61,766
Men	50,543	58,808	66,498	66,962
Women	39,559	47,261	53,407	53,881



Social minimum wage as from August 1st, 2018	Rate	Minimum hourly gross wage	Minimum monthly gross wage
Index = 814.40	in %	in EUR	in EUR
Qualified adults	120	14.21	2,458.25
Unqualified adults	100	11.84	2,048.54
17 to <18 years	80	9.47	1,638.83
15 to <17 years	75	8.88	1,536.41

Mean consumption expenditure of households	1998	2010	2015	2016
				in %
Total	1,000.0	1,000.0	1,000.0	1,000.0
Food and non-alcoholic beverages	100.8	87.7	87.1	86.1
Alcoholic beverages and tobacco	19.9	14.2	13.2	13.6
Clothing and footwear	59.4	61.6	53.6	53.0
Housing, water, electricity, gas and other fuels	273.5	337.7	349.5	357.1
Furnishings, household equipment and routine maintenance of the house	82.2	62.7	62.9	63.0
Health	23.7	24.7	24.0	25.4
Transport	155.0	144.9	139.8	134.3
Communication	21.1	21.5	25.2	25.9
Recreation and culture	87.0	73.0	69.4	64.7
Education	1.7	3.5	7.8	7.9
Hotels, cafes and restaurants	96.1	75.8	82.8	83.7
Miscellaneous goods and services	79.6	92.8	84.7	85.4

#### Monthly mean disposable income per household



# Social security & Health

Social security	2000	2010	2016	2017
Health and maternity insurance				
Number of insured	352,636	474,966	555,056	572,608
Number of covered persons	535,424	704,633	817,648	841,535
Regular expenditures (in millions of EUR)	1,069.4	2,217.1	2,857.4	3,101.9
Long term care insurance				
Number of covered persons	535,424	699,539	813,124	841,535
Regular expenditures (in millions of EUR)	223.1	729.1	631.6	662.8
Pension benefits				
Number of contributors	247,253	347,886	405,583	420,162
Number of pensions <sup>1</sup>	107,571	138,483	170,618	175,893
Total amount paid in pensions (in millions of EUR)	1,476.5	2,849.5	3,932.4	4,183.1
Accident insurance				
Number of insured enterprises	24,413	40,760	49,148	...
Claims made	34,127	33,990	33,020	...
Claims paid and surrender of claims	16,083	15,317	13,898	...
Expenditure on benefits (in millions of EUR)				
Goods and services	25.6	36.7	37.1	38.3
Cash payments	114.6	164.7	158.1	162.5

<sup>1</sup> new methodology from 2010 onwards

Health (Situation on 1st January)	2000	2010	2016	2017
Practising physicians <sup>1</sup>	938	1,406	1,683	1,780
General practitioners	279	414	505	534
Specialists physicians (stomatologists included)	...	992	1,178	1,246
Practising dentists and dental specialists	260	422	550	581
Veterinarians in activity	104	184	239	249
Practising nurses and health care assistants	...	8,268	10,367	10,636
Practising physicians per 1,000 inhabitants (without dentists)	2.1	2.8	2.9	3.0
Pharmacies	89	98	101	100
Hospitals	18	12	12	12
Hospital beds	...	2,721	2,819	2,795
Beds per 1,000 inhabitants	...	5.4	4.8	4.7

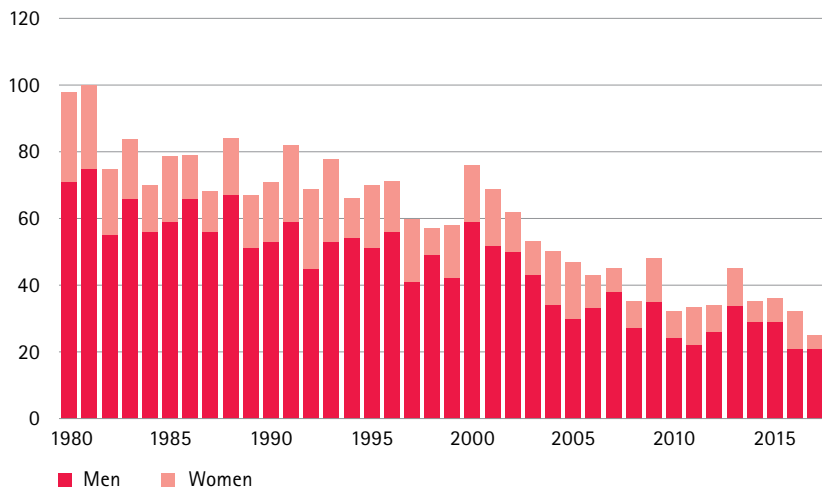
<sup>1</sup> physicians providing services directly to patients

Reported cases of epidemic	2010	2015	2016	2017
AIDS	7	10	9	8
Tuberculosis	27	34	29	33
Hepatitis C	73	61	49	94

## Accidents

Road accidents	2000	2010	2016	2017
Accidents resulting in death or injury	901	876	941	955
of which: Fatal accidents	68	29	29	24
Casualties	1,333	1,217	1,235	1,297
Killed	76	32	32	25
Injured	1,257	1,185	1,203	1,272
of which: Seriously injured	400	266	249	256

### Persons killed in road accidents



## Crime

Offences	2000	2010	2016	2017
Total	22,816	30,532	38,537	36,721
Offences against goods	16,407	18,531	22,306	22,319
of which: Burglaries	2,951	2,413	3,205	3,465
Thefts linked to vehicles	3,886	2,018	1,903	2,424
Other thefts	5,552	7,218	10,043	10,213
Offences against people	2,351	6,134	8,257	7,568
of which: Acts of violence	1,269	2,682	3,795	3,617

## Education

	1999/2000	2009/10	2015/16	2016/17
Pupils <sup>1</sup>				
Elementary school:				
cycle 1 - Early childhood education	2,035	4,105	4,133	4,380
cycle 1 - Pre-primary education	10,704	10,026	11,027	11,008
cycles 2 to 4 - Primary education	30,475	32,312	32,556	32,931
Technical secondary education	20,962	25,184	27,525	27,221
Secondary education	9,641	12,757	12,057	11,950
University of Luxembourg	1,409	4,951	6,041	6,000
Advanced technician's certificate training (B.T.S.)	205	274	642	762
Students at foreign universities <sup>2</sup>	4,401	8,562	26,140	27,404
of which: in Belgium	1,166	1,793	6,467	6,731
in France	885	1,310	5,743	6,705

### Teachers<sup>1, 3, 4</sup>

Elementary school:				
cycle 1 - Early childhood education	-	381	565	495
cycle 1 - Pre-primary education	631	946	945	772
cycles 2 to 4 - Primary education	1,949	3,498	4,125	4,448
Secondary and technical secondary education	3,031	4,096	4,332	4,504

<sup>1</sup> without international and private schools which don't follow the official programs defined by the Ministry of Education

<sup>2</sup> students on grant

<sup>3</sup> including uncertificated teachers

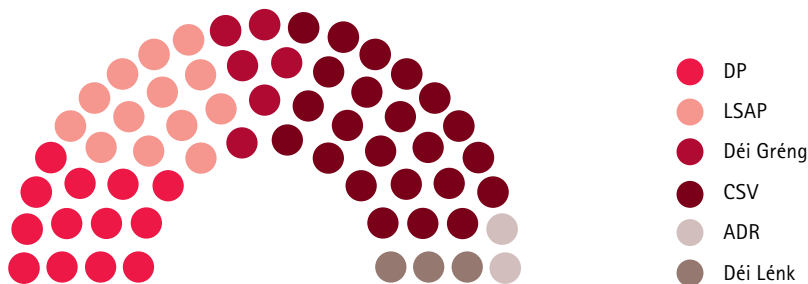
<sup>4</sup> teachers working both in early childhood education and in pre-primary education are counted within pre-primary education

## Politics

National elections	1999	2004	2009	2013
	Number of seats			
All parties	60	60	60	60
Christian Social People's Party (CSV)	19	24	26	23
Democratic Party (DP)	15	10	9	13
Luxembourg Socialist Workers' Party (LSAP)	13	14	13	13
The Greens (Déi Gréng)	5	7	7	6
Alternative Democratic Reform Party (ADR) <sup>1</sup>	7	5	4	3
The Left (Déi Lénk)	1	.	1	2
	in %			
Women	15.0	23.3	20.0	28.0

<sup>1</sup> 1999-2004: Action Committee for Democracy and Pensions Justice

### Composition of the Chamber of Deputies (2013)



European elections	1999	2004	2009	2014
	Number of seats			
All parties	6	6	6	6
Christian Social People's Party (CSV)	3	3	3	3
Democratic Party (DP)	1	1	1	1
Luxembourg Socialist Workers' Party (LSAP)	1	1	1	1
The Greens (Déi Gréng)	1	1	1	1

Local elections	1999	2005	2011	2017
Municipal councils (proportional representation)			Number of seats	
All parties	420	475	555	600
Christian Social People's Party (CSV)	126	151	170	209
Luxembourg Socialist Workers' Party (LSAP)	139	165	168	155
Democratic Party (DP)	106	100	106	108
The Greens (Déi Gréng)	23	41	74	77
The Left (Déi Lénk)	6	1	7	8
Alternative Democratic Reform Party (ADR) <sup>1</sup>	11	5	4	4
Other parties	9	12	26	39

<sup>1</sup> 1999-2005: Action Committee for Democracy and Pensions Justice

## Culture & Travelling

	2015	2016	2017
<b>National library</b>			
Registered users	17,171	19,232	19,874
Borrowed documents	89,079	89,716	83,992
Onsite consultation	23,844	18,972	21,390
Interlibrary loan	7,679	7,206	6,426
Online consultation on eluxemburgensia.lu	904,125	953,442	1,147,083

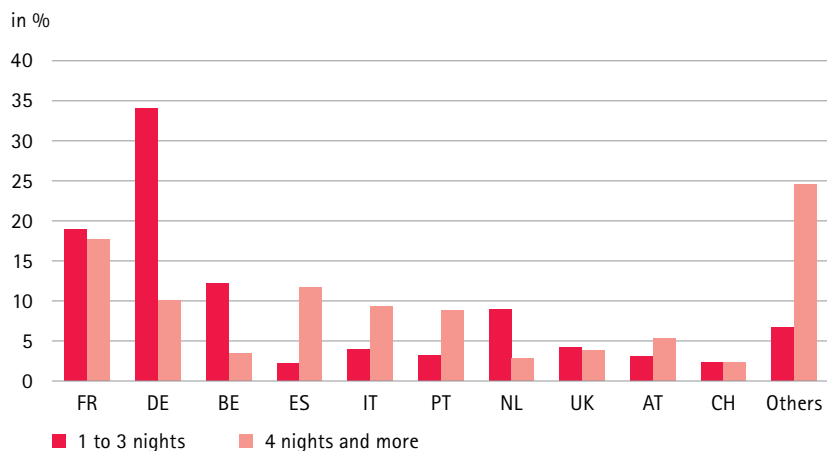
### Visits of cultural institutions

National Museum of History and Art (MNHA)	60,222	63,974	63,988
National Museum of National History (MNHN)	33,929	26,602	48,813
Museum of Modern Art Grand-Duc Jean (MUDAM)	90,964	97,081	99,865
Philharmonie Luxembourg	191,705	190,050	...
Centre de Musiques Amplifiées (Rockhal)	178,000	230,824	...
Permanent exhibition "The Family of Man"	15,733	16,040	15,310

Travelling	2000	2010	2015	2016
Participation in tourism <sup>1</sup>				in %
Leisure travels	74.6	74.7	82.9	80.9
Business travels	17.2	11.9	11.1	15.8
Average expenditure per person <sup>1</sup>				in EUR
Leisure travels	643	664	749	770
Business travels	611	799	974	1,123

<sup>1</sup> share of residents (aged 15 or over) having made at least one holiday trip of at least one overnight stay per year

### Destinations by length of stay, 2016 (Travelling for leisure purpose)





# ENTERPRISES

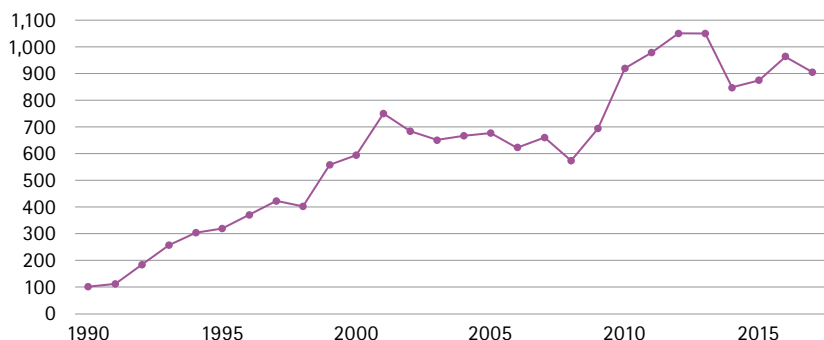
## Business demography

Enterprises by economic activity in 2015	Active	Births	Deaths
Active enterprises			
Industry	946	35	58
Construction	3,608	304	270
Services	32,148	3,001	2,408
Wholesale and retail trade	7,484	613	649
Transportation and storage	1,217	92	82
Accommodation and food service activities	2,758	268	264
Information and communication	2,238	302	193
Financial and insurance activities	1,663	114	76
Real estate activities	3,219	317	210
Professional, scientific and technical activities	6,688	684	507
Administrative and support service activities	2,085	260	176
Other service activities (education, health,...)	4,796	351	251
<b>Total</b>	<b>36,702</b>	<b>3,340</b>	<b>2,736</b>

Enterprises, by employee size class, 2015	no employees	1 to 4 employees	5 to 9 employees	≥ 10 employees
				in %
Active enterprises	38.8	37.5	10.7	13.1
Enterprises births	57.7	37.1	3.8	1.4
Enterprises deaths (2014)	59.9	34.4	4.1	1.6



## Companies



## Largest private and public employers (Situation on January 1st, 2018)

Name	Economic activity	Persons employed
Government		27,716
Municipal administration of the City of Luxembourg		4,123
Group Post Luxembourg	Wired telecommunications activities	4,480
Groupe CFL	Passenger rail transport, interurban	4,260
Groupe Cactus	Retail sale in non-specialised stores	4,200
Groupe ArcelorMittal	Manufacture of basic iron, steel and of ferro-alloys	4,120
Groupe Dussmann Luxembourg	Cleaning activities	3,880
BGL BNP Paribas	Monetary intermediation	3,660
Goodyear Dunlop Tires Operations SA	Manufacture of rubber products	3,450
Groupe PricewaterhouseCoopers	Accounting, bookkeeping and auditing activities; tax consultancy	2,870
Luxair SA	Passenger air transport	2,820
Centre Hospitalier de Luxembourg	Hospital activities	2,270
Amazon.com	Activities of head offices	2,250
Fondation Hôpitaux Robert Schuman	Hospital activities	2,240
Groupe Deloitte à Luxembourg	Accounting, bookkeeping and auditing activities; tax consultancy	2,140
Sodexo Luxembourg SA	Event catering and other food service activities	2,030

# Agriculture

General survey (Situation on 1st April) <sup>1</sup>	2000	2010	2016	2017 <sup>3</sup>
<b>Number of farms (total)</b>	<b>2,728</b>	<b>2,201</b>	<b>1,965</b>	<b>1,932</b>
Farms of 2 ha and more	2,393	1,981	1,793	1,772
Family farm labour force <sup>2</sup>	5,554	4,321	3,795 <sup>3</sup>	...
Wage-earners	650	655	1,002 <sup>3</sup>	...
Total of agricultural labour in AWU <sup>2</sup>	4,292	3,726	3,446 <sup>3</sup>	...
Average area (in ha)	53.2	66.1	72.9	74.0
Utilised agricultural area (in ha)	127,643	131,106	130,651	131,158
of which in %: Cereals	22.4	22.7	21.3	21.3
Forage crops	20.4	19.5	20.6	20.8
Meadows	16.4	6.7	7.7	7.7
Pastures	34.8	44.7	43.6	43.6
Vineyards	1.0	1.0	1.0	1.0
Other crops	5.0	5.4	5.8	5.6
Bovine livestock	205,072	198,830	201,416	202,130
Pig livestock	80,141	83,774	92,312	96,761
Sheep livestock	7,971	9,084	8,951	8,478
Equine livestock	3,154	4,601	4,540	4,725

<sup>1</sup> situation on 15 May in 2000 and 2010

<sup>2</sup> Annual Working Unit

<sup>3</sup> preliminary figures

Crop production	2000	2010	2016	2017
				in tonnes
Wheat, spelt, rye	64,787	88,592	74,242	82,535
Other crops	88,043	77,593	65,030	66,945
Colza	8,370	15,895	10,915	11,340
Dried pulses	1,235	973	1,304	1,610
Potatoes	27,858	19,531	18,714	21,359
Maize (dry matter)	130,236	181,104	179,959	244,990
Other forage crops (dry matter)	168,705	99,073	129,218	101,654
Grassland and pasture (dry matter)	639,715	479,438	545,629	441,279

Animal products	2000	2010	2016	2017
				in 1,000 tonnes
Meat <sup>1</sup>	24.4	31.7	32.3	33.7
Milk	264.5	295.3	376.2	387.2

<sup>1</sup> slaughtering + export of live animals - import of live animals



Bovine livestock  
**202,130**



Sheep livestock  
**8,478**



Equine livestock  
**4,725**



Pig livestock  
**96,761**

## Forestry

	2000	2010	2016	2017
				in 1,000 m <sup>3</sup>
Production of raw wood	266	495	306	351
Import of raw wood	753	906	343	832
Export of raw wood	219	265	245	661

## Wine-growing

	1999/2000	2009/10	2016/17	2017/18
				in 1,000 hectolitres
1. Wine production	184.3	134.8	82.9	81.2
of which: Rivaner	73.7	47.2	23.1	23.8
Pinot blanc	19.3	14.0	10.3	12.6
Auxerrois	19.9	19.5	13.1	12.0
Pinot gris	17.9	13.9	10.4	11.6
Riesling	19.0	14.5	9.8	9.0
Others	34.5	25.7	16.2	12.2
2. Import	255.6	222.0	227.0	...
3. Stock variation	42.0	5.0	-13.4	...
4. Total offer (4) = (1) + (2) - (3)	397.9	351.8	323.3	...
5. Total Export	101.4	79.9	61.6	...
of which: Export	57.7	52.3	36.7	...
Re-export	43.7	27.6	24.9	...
6. Domestic sales (6) = (4) - (5)	296.5	271.9	261.7	...

## Handicraft

Group of crafts	Enterprises		Employees	
	2010	2017	2010	2017
Food	263	250	5,684	7,253
Fashion, health and hygiene	1,166	1,452	5,011	6,051
Mechanics	839	1,138	9,362	12,694
Construction	2,818	3,674	49,959	61,496
Communication, multimedia and performing arts	346	585	2,763	3,476
Miscellaneous craft activities	67	204	209	593
Total	5,499	7,303	72,988	91,563

## Industry

Steel industry	2000	2010	2016	2017
Production			in 1,000 tonnes	
Steel	2,571	2,548	2,175	2,172
Rolled steel products	3,360	2,506	2,453	2,447
Finished rolled products	2,918	2,276	2,056	2,055
Shapes (joists, etc.)	1,058	1,272	1,437	1,444
Merchants products	750	427	75	71
Sheets and coils	1,033	577	544	540
Semi-finished products	442	230	397	392

# Construction & Housing

Building permissions	2000	2010	2016	2017
Number of buildings	1,642	1,901	2,075	2,298
Number of dwellings	3,412	3,892	4,846	4,953
Interior space (1,000 m <sup>3</sup> )	5,450	5,496	6,293	7,812

Finished buildings	2000	2010	2014	2015
Buildings	1,066	1,018	1,599	1,459
Dwellings	1,671	2,824	3,357	3,091
of which: One-dwelling residential buildings	896	747	1,277	1,194
Two and more dwelling residential buildings	642	1,331	1,744	1,329
Total floor area (in m <sup>2</sup> )	594,297	703,549	839,853	829,127

Building price index	2010	2015	2016	2017
Index 100 in 1970 (annual average)	682.08	755.30	762.90	777.9

Average apartment prices	2010	2015	2016	2017
Average price (in EUR)	322,336	395,101	413,765	441,099
Average floor area (in m <sup>2</sup> )	82	82	80	82
Average price by floor area (in EUR/m <sup>2</sup> )	3,973	4,899	5,262	5,522

# Tourism

**General survey** (Situation on December 31st)

## Number of establishments

Hotels and similar establishments	343	262	226	225
Camping sites	116	99	88	87

## Capacities

Hotels and similar establishments (rooms)	8,103	8,415	7,525	7,262
Camping sites (persons)	51,464	48,777	44,376	43,828

## Arrivals of tourists

x 1,000

All types of accommodation	895	855	1,162	1,156
Hotels and similar establishments	607	686	920	898
Camping sites	192	125	144	151
Other types of accommodation	96	44	98	107

## Overnight stays of tourists

x 1,000

All types of accommodation	2,677	1,860	2,956	2,892
Hotels and similar establishments	1,263	1,252	1,754	1,694
Camping sites	1,042	487	970	939
Other types of accommodation	372	120	233	259

## Overnight stays by country of residence of the guests in 2017

(All types of accommodation)



Netherlands

**735,033**

Belgium

**507,021**

Germany

**312,879**

Rest of the world

**1,336,695**

# Transport

<b>Roads</b> (Situation on 1st January)	2000	2010	2017	2018
				in km
National network	2,863	2,899	2,912	2,914
of which: Motorways	115	152	165	165

<b>Motor vehicles</b> (Situation on January 1st)	2000	2010	2017	2018
Type of vehicles				
Total	318,914	411,443	466,472	482,001
of which: Motorcycles	10,810	15,551	19,485	20,601
Passenger cars	263,475	331,503	390,935	403,282
Motor coaches	984	1,623	1,904	1,963
Lorries and vans	19,226	29,191	36,732	38,558
Road tractors and special vehicles	5,258	8,006	7,648	7,906

<b>Passenger cars by label</b> (Situation on January 1st)	2000	2010	2017	2018
				in %
Volkswagen	13.8	13.9	14.3	14.2
BMW	5.4	8.6	10.4	10.5
Audi	5.7	7.6	8.7	8.7
Mercedes	5.2	6.9	7.6	7.8
Renault	8.7	7.5	6.3	6.1
Peugeot	6.2	6.9	5.5	5.4
Ford (D)	9.4	5.8	5.0	4.8
Citroën	4.2	5.7	4.6	4.3
Opel	7.4	4.5	3.9	3.8
Hyundai	0.7	3.9	3.4	3.3
Others	33.3	28.9	30.3	31.1

New motor vehicle registrations (four wheels and more)	2000	2010	2016	2017
Total	47,064	54,951	57,313	59,827
of which: Passenger and estate cars	41,896	49,726	50,561	52,775

Road goods transport	2000	2010	2016	2017
			in millions of tkm <sup>1</sup>	
Total	7,476	8,655	7,109	7,269
Inland traffic	448	572	721	721
International traffic	7,028	8,083	6,388	6,548

<sup>1</sup> tonne-kilometre

Railways	2000	2010	2016	2017
Utilised railways (in km)	274	275	275	275
Passenger-km (in millions)	332	347	417	438
Tonnes-kilometres (in millions)	683	323	223	233

Port of Mertert	2000	2010	2016	2017
			in 1,000 tonnes	
Loading	491	147	257	260
Unloading	1,109	685	570	595

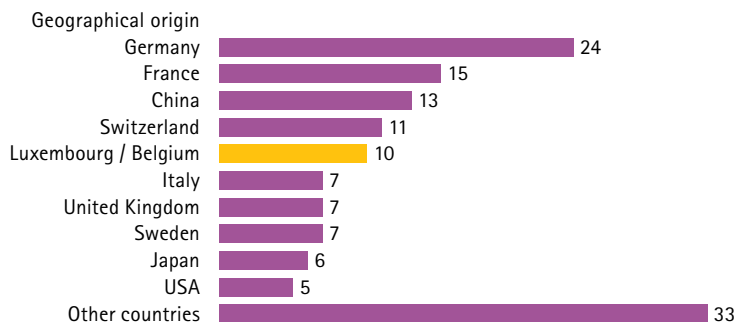
Luxembourg airport	2000	2010	2016	2017
Passengers (in thousands)	1,669	1,630	3,023	3,599
of which: Transit	7	-	1	0
Freight (in tonnes)	500,811	705,370	802,426	897,569
of which: Transit	3	732	1,531	437



## Financial services

<b>Banking</b> (Situation on December 31st)	2000	2010	2016	2017
Number of banks	202	145	141	139
Employees	23,035	26,255	26,062	26,111
of which: Women	10,613	12,040	11,925	11,857
in billions of EUR				
Total balance sheet	647.7	769.3	763.7	745.6
Total credits	446.4	555.2	591.0	598.9
Bank credits	317.3	364.0	376.5	379.5
Client credits	129.1	191.2	214.5	219.4
Total deposits	521.4	614.0	612.9	597.8
Bank deposits	297.7	348.2	269.3	245.4
Client deposits	223.7	265.8	343.6	352.5
Net profit (after taxes)	2.4	3.9	4.8	...

### **Banks by geographical origin** (Situation on May 2018)



<b>Luxembourg Stock Exchange</b>	2000	2010	2016	2017
Quotation lines	19,690	44,916	36,505	35,703
Turnover (in millions of EUR)	2,820	219	185	198
Price by ingot of 1 kg of fine gold (in EUR) <sup>1</sup>	9,510	33,920	35,445	34,930

<sup>1</sup> end of year

<b>Undertaking for collective investment (UCI)</b> (Situation on December 31st)	2000	2010	2016	2017
<b>Unit investment trust funds</b>				
Number	914	1,944	1,588	1,518
Net assets (in billions of EUR)	462.8	652.2	837.1	864.1
<b>SICAV<sup>1</sup> investment fund</b>				
Number	840	1,701	2,226	2,196
Net assets (in billions of EUR)	404.0	1,540.1	2,841.0	3,222.4
<b>Other UCI<sup>2</sup></b>				
Number	31	22	47	44
Net assets (in billions of EUR)	7.8	6.7	23.0	26.5
<b>SICAR<sup>3</sup> investment companies</b>				
Number	.	.	283	286
Net assets (in billions of EUR)	.	.	40.3	46.6

<sup>1</sup> investment company with variable capital

<sup>2</sup> undertakings for collective investment

<sup>3</sup> investment company in risk capital

<b>Insurance</b> (Situation on December 31st)	2000	2010	2016	2017 <sup>1</sup>
in millions of EUR				
Total amount of gross premiums written	6,865.4	24,691.0	25,056.4	27,047.1
of which: Life	6,028.6	22,384.9	21,471.8	23,323.0
Non-life	836.8	2,306.1	3,584.6	3,724.1
of which Fire, natural elements	64.7	274.0	362.5	387.6
Accidents - Civil liability	189.1	462.8	582.9	642.5
Legal protection insurance	9.3	37.1	33.2	34.2
Number				
Insurance companies	93	95	91	90
Reinsurance companies	264	244	208	204

<sup>1</sup> provisional figures

<b>Interest rates</b>	2000	2010	2016	2017
in %				
Savings deposit rate <sup>1,2</sup>	3.35	0.88	0.51	0.27
Mortgage rate <sup>1</sup>	5.98	2.31	1.93	1.87
Legal interest rate	5.00	3.50	2.25	2.25

<sup>1</sup> situation in December

<sup>2</sup> since 2003, deposits with agreed maturity up to 2 years

## Telecommunications

<b>Electronic communications</b> (Situation on December 31st)	2010	2015	2016	2017
				x 1,000
Fixed telephone lines	272.0	276.9	276.4	275.5
Mobile phone subscriptions	727.0	905.9	896.6	932.0
High-speed internet access subscriptions	146.9	107.8	93.9	75.5
Ultra high-speed internet access subscriptions	8.1	87.4	109.2	139.1

## Information society

<b>Access of households to information and communication technology systems (ICT)</b>	2010	2015	2016	2017
				in % of households
Access to Internet	90	97	97	97
				in % of households having Internet access
E-commerce	51	65	70	71
E-banking	63	67	73	78
Reading newspapers/news online	66	85	89	88

<b>Equipment of enterprises</b>	2010	2012	2014	2016
				in %
Enterprises with Internet access	96	98	100	100
Enterprises with Internet access and website	70	77	77	81



# ECONOMY & FINANCES

## National accounts

Main aggregates	2000	2010	2016	2017
<b>Production approach</b>	in billions of EUR			
1. Output (at basic prices)	55.1	115.5	183.5	197.0
2. Intermediate consumption	34.5	79.4	135.5	146.7
3. Gross value added (1-2)	20.6	36.1	48.0	50.3
4. Taxes less subsidies on products	2.5	4.1	5.0	5.1
<b>Expenditure approach</b>				
5. Final consumption expenditure (6+7+8)	12.2	19.8	24.9	25.8
6. of households	8.5	12.4	15.2	15.8
7. of NPISH <sup>1</sup>	0.3	0.6	0.8	0.9
8. of general government	3.4	6.8	8.8	9.1
9. Gross fixed capital formation	5.1	7.2	9.5	9.6
10. Exports (11+12)	34.3	70.1	117.3	127.4
11. of goods	9.2	16.0	16.6	17.7
12. of services	25.1	54.1	100.7	109.7
13. Imports (14+15)	28.5	56.9	98.7	107.4
14. of goods	11.7	16.6	17.3	18.1
15. of services	16.8	40.3	81.4	89.3
<b>Income approach</b>				
16. Compensation of employees	10.7	19.9	26.0	27.7
17. Operating surplus	9.6	15.9	21.3	21.8
18. Taxes on production and imports	2.8	4.4	5.7	5.9
19. GDP <sup>2</sup> (3+4=5+9+10-13=16+17+18)	23.1	40.2	53.0	55.4
20. Balance of compensation of employees with ROW <sup>3</sup>	-2.6	-6.7	-8.9	...
21. Balance of taxes on production and imports with ROW <sup>3</sup>	0.0	0.0	0.0	...
22. Balance of property income with ROW <sup>3</sup>	-0.8	-4.0	-8.1	...
23. Gross national income (19+20+21+22)	19.7	29.4	36.0	...
24. Consumption of fixed capital	2.8	4.9	6.4	...
25. Net national income (23-24)	16.9	24.6	29.6	...
26. GDP <sup>2</sup> growth rate (in %)	8.2	4.9	3.1	2.3
27. Compensation of employees per capita (in thousands of EUR)	43.5	58.9	66.3	68.2

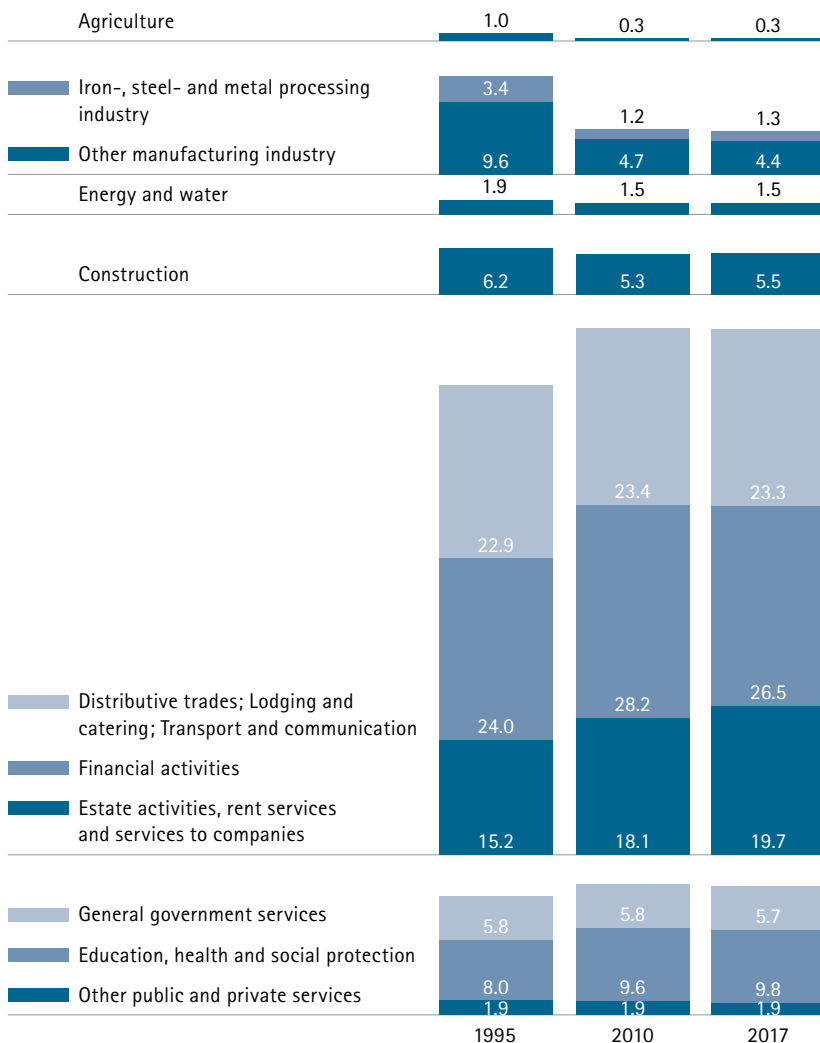
European System of integrated economic Accounts (ESA 2010)

<sup>1</sup> NPISH: non-profit institutions serving households

<sup>2</sup> GDP: Gross Domestic Product

<sup>3</sup> ROW: rest-of-the-world

## Structure of the gross value added at basic prices (in %)



## Public finances

General government expenditure and revenue	2000	2010	2016	2017
<b>General government consolidated</b>	in millions of EUR			
Expenditure	8,726.9	17,728.8	22,330.7	23,732.2
Gross capital formation	892.5	1,892.1	2,093.6	2,224.3
Social benefits	3,906.7	8,345.3	10,494.5	11,127.4
Revenue	10,085.9	17,464.3	23,186.4	24,571.4
Taxes on production and imports	3,055.8	4,914.7	6,309.8	6,568.8
Current taxes on income, wealth, etc.	3,283.7	5,731.0	8,012.0	8,542.2
Social contributions	2,527.9	4,886.0	6,461.1	6,916.3
Net lending (+) / Net borrowing (-)	1,359.0	-264.5	855.7	839.2
<b>Central government</b>				
Expenditure	6,358.3	12,939.2	16,238.3	17,103.6
Revenue	7,027.1	11,995.6	16,009.1	16,864.4
Net lending (+) / Net borrowing (-)	668.8	-943.6	-229.2	-239.2
<b>Local governments</b>				
Expenditure	1,144.8	2,097.8	2,615.6	2,707.7
Revenue	1,255.4	2,161.7	2,747.9	2,790.0
Net lending (+) / Net borrowing (-)	110.6	63.9	132.4	82.3
<b>Social security funds</b>				
Expenditure	3,522.3	7,276.5	9,126.1	9,802.3
Revenue	4,101.9	7,891.7	10,078.6	10,798.4
Net lending (+) / Net borrowing (-)	579.6	615.2	952.6	996.1
<b>Government debt</b>	2000	2010	2016	2017
	in millions of EUR			
Central government	1,043.2	6,989.4	9,995.3	11,751.3
of which: Foreign debt	129.5	2,763.0	3,963.4	5,423.2
Local government	454.3	960.1	1,026.5	956.2
Social security funds	0.3	0.0	2.0	2.0
Total	1,497.7	7,949.5	11,023.8	12,709.4

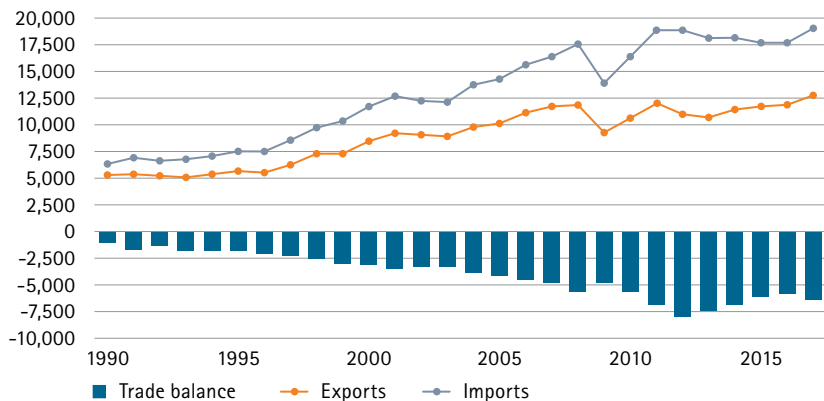
## External trade

Exports and Imports by product type	Exports		Imports	
	2016	2017	2016	2017
Group of divisions of the SITC <sup>1</sup>				
	in millions of EUR			
Total	11,903.1	12,660.5	17,636.1	18,983.8
1. Food and live animals	837.9	898.8	1,578.2	1,597.4
2. Beverages and tobacco	222.1	224.0	559.6	594.9
3. Crude materials, oils, fats and waxes	286.5	300.5	1,133.3	1,384.8
4. Mineral fuels, lubricants	7.3	9.9	1,320.2	1,574.1
5. Chemicals and related products	1,339.4	1,402.5	2,050.9	2,196.3
6. Manufactured goods in metals	2,701.5	3,015.3	1,432.1	1,555.5
7. Other manufactured goods classified chiefly by material	1,909.1	1,944.2	1,355.2	1,366.1
8. Machinery	2,253.3	2,403.8	2,978.0	3,153.8
9. Transport equipment	1,194.8	1,240.4	3,308.4	3,654.6
10. Other manufactured goods	1,151.1	1,221.2	1,920.2	1,906.4

<sup>1</sup> standard international trade classification

## Trade balance

in millions of EUR



External trade by countries	Exports		Imports	
	2016	2017	2016	2017
in millions of EUR				
<b>Total</b>	<b>11,903.1</b>	<b>12,660.5</b>	<b>17,636.1</b>	<b>18,983.8</b>
<b>Europe</b>	<b>10,299.3</b>	<b>11,064.3</b>	<b>15,589.4</b>	<b>17,108.6</b>
European Union (28 countries)	9,647.8	10,346.7	15,399.2	16,929.5
of which: Germany	3,286.5	3,523.5	4,855.7	5,036.7
France	1,737.1	1,862.8	2,061.8	2,321.4
Belgium	1,408.2	1,471.5	5,802.9	6,407.0
Netherlands	675.8	701.8	862.5	972.7
United Kingdom	464.3	517.8	285.9	425.2
Italy	474.6	502.2	411.5	448.1
Poland	264.9	300.4	180.1	239.0
Spain	279.1	299.7	160.0	224.7
Austria	223.1	264.4	128.7	135.3
Sweden	166.7	176.5	70.8	79.7
Czech Republic	143.8	161.8	165.5	173.3
Denmark	94.3	93.5	45.6	49.5
Hungary	56.8	77.2	65.7	66.7
Portugal	48.6	58.7	52.6	62.3
Finland	43.9	50.9	20.7	24.2
Slovakia	45.3	47.3	24.0	26.6
Ireland	38.0	45.8	124.7	145.4
Slovenia	36.2	38.4	14.4	12.3
Greece	27.8	26.7	15.4	12.1
Other countries of Europe	651.5	717.6	190.2	179.1
of which: Switzerland	244.7	319.7	133.3	120.0
Russia	126.5	151.9	5.0	14.4
Turkey	127.2	114.2	21.0	16.6
<b>Outside Europe</b>	<b>1,603.7</b>	<b>1,596.2</b>	<b>2,046.8</b>	<b>1,875.3</b>
America	619.8	672.0	1,313.5	972.5
of which: USA	438.8	428.5	1,047.1	801.6
Canada	83.4	106.3	201.9	82.9
Brazil	23.8	47.3	51.8	17.9
Asia	785.4	699.3	679.0	800.8
of which: China	223.2	214.8	125.1	165.7
Japan	69.0	77.4	394.7	491.6
South Korea	56.4	48.2	11.7	22.0
Hong Kong	51.0	32.8	11.6	9.0
India	42.9	30.3	8.5	5.6
Africa	169.4	177.2	41.2	84.8
Oceania	25.0	30.1	4.4	5.2
Others	4.1	17.6	8.6	12.0



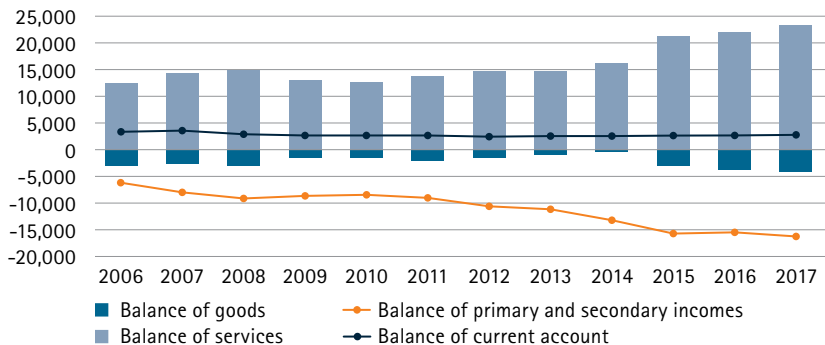
## Balance of current account

Current account	2010	2015	2016 <sup>1</sup>	2017 <sup>1</sup>
in millions of EUR				
1. Goods (balance)	-1,558	-2,974	-3,899	-4,157
Exports	14,883	14,692	13,685	14,164
Imports	16,441	17,667	17,584	18,321
2. Services (balance)	12,711	21,274	22,020	23,211
Exports	47,122	87,617	87,152	90,680
Imports	34,411	66,342	65,132	67,469
3. Primary income (balance)	-8,599	-16,450	-15,922	-16,574
3.a (of which:) Compensation of employees (balance)	-6,708	-8,568	-8,912	-9,150
Credit	1,225	1,411	1,479	1,500
Debit	7,932	9,979	10,391	10,650
3.b (of which:) Investment income (balance)	-1,943	-7,908	-6,953	-7,340
Credit	109,874	199,702	163,030	154,433
Debit	111,817	207,610	169,983	161,773
4. Secondary income (balance)	128	793	500	275
Credit	6,597	8,504	8,543	9,155
Debit	6,469	7,711	8,043	8,880
Current account balance (1 + 2 + 3 + 4)	2,682	2,643	2,698	2,755

<sup>1</sup> provisional figures

## Balance of current account

in millions of EUR



International trade in services by partner	Exports		Imports	
	2016	2017	2016	2017
	in million EUR			
<b>Total (Rest of the World)</b>	<b>87,152</b>	<b>90,680</b>	<b>65,132</b>	<b>67,469</b>
<b>Europe</b>	<b>70,639</b>	<b>74,626</b>	<b>48,344</b>	<b>50,249</b>
European Union (EU28)	62,655	65,901	41,890	44,039
of which: Germany	15,016	17,270	9,600	11,067
United Kingdom	12,886	12,793	11,690	12,616
France	8,886	9,563	4,975	5,263
Italy	7,157	7,414	2,382	2,705
Belgium	5,211	5,372	2,447	2,553
Netherlands	2,664	2,640	2,012	1,874
Spain	2,437	2,528	1,315	1,391
Sweden	1,929	1,922	1,469	1,650
Ireland	868	925	3,092	2,066
EU institutions	791	803	15	15
Portugal	829	618	471	366
Austria	569	558	428	418
Denmark	578	515	431	315
Finland	527	515	164	186
Poland	375	466	285	307
Hungary	319	318	231	270
Czech Republic	295	317	187	219
Cyprus	245	291	74	96
Romania	204	218	145	156
Greece	195	193	143	151
Other european countries	7,984	8,726	6,454	6,210
of which: Switzerland	5,847	6,696	5,408	5,231
Norway	327	294	323	297
<b>America</b>	<b>7,721</b>	<b>7,918</b>	<b>10,888</b>	<b>11,531</b>
of which: United States	4,777	5,024	8,705	9,359
Canada	549	540	195	162
Bermuda	278	277	1,562	1,561
<b>Asia</b>	<b>7,085</b>	<b>6,348</b>	<b>5,522</b>	<b>5,326</b>
of which: Hong Kong	1,040	1,091	1,154	945
Japan	876	983	307	299
Singapore	842	824	3 199	3,381
China	1,560	805	192	139
<b>Africa</b>	<b>1,026</b>	<b>1,052</b>	<b>239</b>	<b>219</b>
of which: South Africa	297	293	43	37
<b>Oceania</b>	<b>655</b>	<b>714</b>	<b>75</b>	<b>79</b>
of which: Australia	440	514	49	34
<b>International Organisations</b>	<b>26</b>	<b>22</b>	<b>64</b>	<b>65</b>

## Prices & Inflation

### Consumer prices by June 2018 (in EUR)

Wheat flour (1 kg)	0.93	Coffee (250 g)	3.57
Bread (500 g sliced)	2.56	Mineral water without fizz (1.5 l)	0.56
Croissant (1 piece)	1.16	Medical consultation, general practitioner	43.70
Porc chop (1 kg)	11.09	Medical consultation, specialist (internal medicine)	41.20
Fresh milk (1 l)	1.35	Petrol 95 octane (1 l)	1.27
Eggs (a dozen)	4.14	Fuel oil (1 l)	0.67
Butter (250 g)	2.37	Diesel (1 l)	1.12
Apples (1 kg)	2.92	Movie ticket	9.10
Fresh bananas (1 kg)	2.12	Daily newspaper (1 unit)	1.67
Potatoes (5 kg)	7.15	Urban bus transport (single ticket)	2.00
White sugar (1 kg)	1.35		

### National consumer price index

	2015	2016	2017
		change rate in %	
General index (= Inflation rate)	0.5	0.3	1.7
Food, non alcoholic beverages	0.8	1.5	2.8
Alcoholic beverages and tobacco	2.6	1.7	1.6
Clothing and shoes	0.4	1.2	1.3
Housing, water, electricity and combustible	-0.9	-1.6	1.7
Furniture, household outfit and repair	1.3	0.6	1.1
Health	0.0	0.1	1.5
Transport	-0.7	-0.7	1.6
Communication	-1.0	0.3	-2.6
Leisure, spectacle and culture	0.9	0.3	2.5
Education	1.3	2.2	2.0
Hotels, cafes and restaurants	3.9	1.4	1.8
Miscellaneous goods and services	0.9	1.0	2.0

### Adjustment dates in the wage indexation system

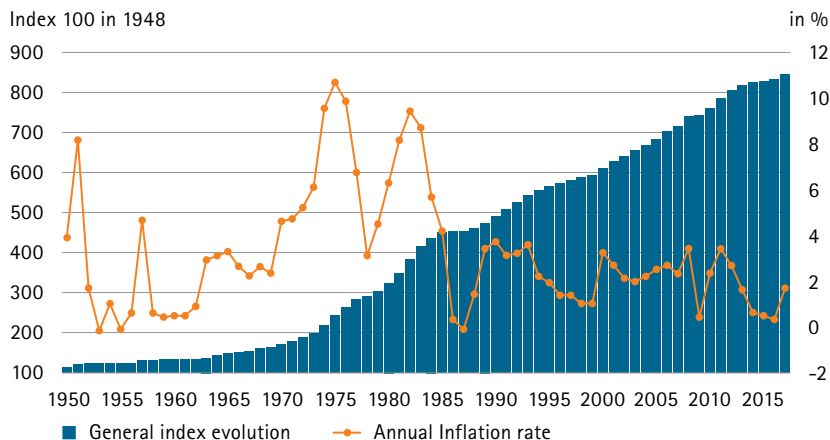
Date of the adjustment	Wage index	Wage increase in %
01/08/2018	814.40	2.5
01/01/2017	794.54	2.5
01/10/2013	775.17	2.5
01/10/2012	756.27	2.5
01/10/2011	737.83	2.5

# Consumption

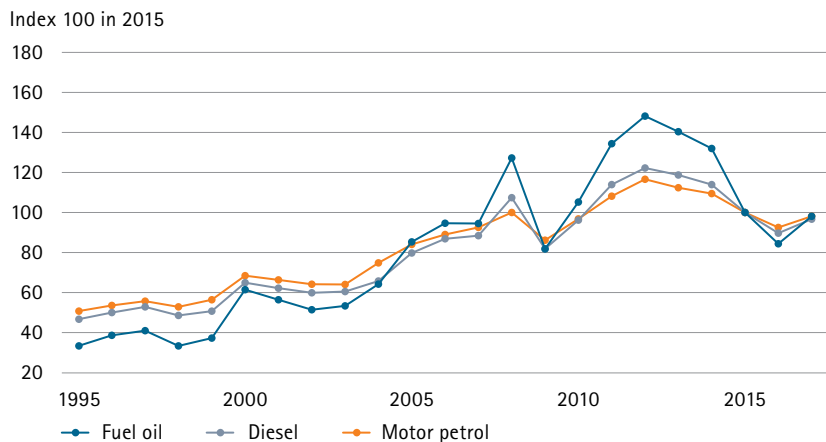
Final consumption of households on the economic territory (including VAT and self-consumption)	2015	2016	2015	2016
	in millions of EUR		in %	
1. Food, non-alcoholic beverages	1,672	1,718	9.46	9.49
2. Alcoholic beverages and tobacco	1,406	1,534	7.96	8.47
3. Clothing and shoes	947	1,003	5.36	5.54
4. Housing, water, electricity, gas and other fuels	4,334	4,405	24.53	24.32
5. Furniture, household outfit and repair	994	1,008	5.63	5.56
6. Health	356	381	2.02	2.10
7. Transport	2,795	2,785	15.82	15.38
8. Communication	274	281	1.55	1.55
9. Leisure and culture	1,121	1,120	6.35	6.18
10. Education	206	168	1.17	0.93
11. Hotels, cafés and restaurants	1,329	1,358	7.52	7.50
12. Miscellaneous goods and services	2,231	2,349	12.63	12.97
<b>Total</b>	<b>17,666</b>	<b>18,110</b>	<b>100.00</b>	<b>100.00</b>

Individual consumption of residents	2013	2014	2015	2016
	in millions of EUR			
1. Actual individual consumption on the economic territory	16,980	17,685	17,666	18,110
2. Actual individual consumption of non-residents on the economic territory	4,098	4,465	4,015	4,145
3. Actual individual consumption of residents abroad	1,162	1,200	1,254	1,282
4. Actual individual consumption of residents (4) = (1) - (2) + (3)	14,045	14,419	14,906	15,247

## Consumer price index



## Consumer price index for fuel (annual average)



## International comparison

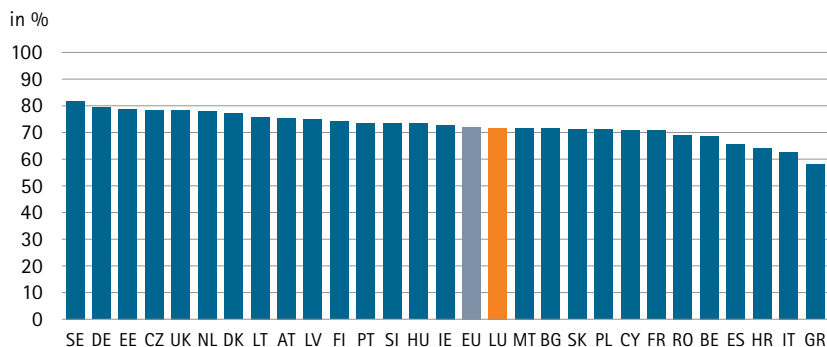
Population and employment	Total population <sup>1</sup> 2017	Population density 2016	Employment <sup>2</sup> 2017	Employment rate <sup>3</sup> 2017	Unemployment rate 2017
	x 1,000	inhabit/km <sup>2</sup>	x 1,000	in %	in %
European Union (28 countries)	511,523	118	217,159	72.1	7.6
Austria, AT	8,773	106	4,048	75.4	5.5
Belgium, BE	11,352	372	4,550	68.5	7.1
Bulgaria, BG	7,102	65	3,058	71.3	6.2
Croatia, HR	4,154	75	1,585	63.6	11.2
Cyprus, CY	855	92	367	70.7	11.1
Czech Republic, CZ	10,579	137	5,071	78.5	2.9
Denmark, DK	5,749	136	2,573	76.9	5.7
Estonia, EE	1,316	30	618	78.7	5.8
Finland, FI	5,503	18	2,334	74.2	8.6
France, FR	66,989	106	26,110	70.6	9.4
Germany, DE	82,522	233	39,386	79.2	3.8
Greece, GR	10,768	82	3,669	57.8	21.5
Hungary, HU	9,798	108	4,348	73.3	4.2
Ireland, IE	4,784	69	2,066	73.0	6.7
Italy, IT	60,589	204	22,343	62.3	11.2
Latvia, LV	1,950	31	856	74.8	8.7
Lithuania, LT	2,848	46	1,296	76.0	7.1
<b>Luxembourg, LU</b>	<b>591</b>	<b>225</b>	<b>267</b>	<b>71.5</b>	<b>5.5</b>
Malta, MT	460	1,450	190	71.4	4.0
Netherlands, NL	17,082	498	7,816	78.0	4.9
Poland, PL	37,973	124	15,994	70.9	4.9
Portugal, PT	10,310	114	4,478	73.4	9.0
Romania, RO	19,644	84	8,274	68.8	4.9
Slovakia, SK	5,435	112	2,491	71.1	8.1
Slovenia, SI	2,066	103	931	73.4	6.6
Spain, ES	46,528	93	18,531	65.5	17.2
Sweden, SE	9,995	24	4,704	81.8	6.7
United Kingdom, UK	65,809	271	29,769	78.2	4.4
Iceland, IS	338	3	172	87.6	2.7
Norway, NO	5,258	17	2,448	78.3	4.2
Switzerland, CH	8,420	210	4,237	82.1	4.8

<sup>1</sup> population on 1st January

<sup>2</sup> European Union Labour Force Survey (LFS), employment by place of residence, males and females: 20-64 years

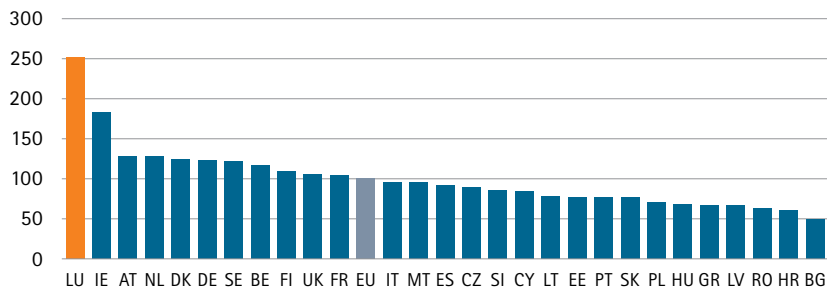
<sup>3</sup> males and females, 20-64 years

## Employment rate in 2017



## GDP per inhabitant in 2017

Purchasing Power Standards (Index 100 = EU-28)



National accounts	GDP at market prices 2017	GDP per inhabitant 2017	Real growth of GDP 2017	Private consump. expenditure 2017	Consump. of general government 2017
	in bil. of EUR	in PPS <sup>1</sup>	in %	in % of GDP	in % of GDP
European Union (28 countries)	15,330	100	2.5	55.6	20.2
Austria	370	128	3.0	52.1	19.5
Belgium	437	117	1.7	51.2	23.4
Bulgaria	50	49	3.6	61.6	16.0
Croatia	49	61	2.8	57.6	19.7
Cyprus	19	84	3.9	68.7	14.9
Czech Republic	192	89	4.4	47.2	19.2
Denmark	288	125	2.2	47.0	25.0
Estonia	23	77	4.9	51.3	20.3
Finland	224	109	2.6	54.6	23.1
France	2,292	104	2.2	54.1	23.6
Germany	3,263	123	2.2	53.1	19.5
Greece	178	67	1.4	69.4	20.0
Hungary	123	68	4.0	49.6	20.1
Ireland	296	184	7.8	31.7	12.0
Italy	1,717	96	1.5	61.1	18.6
Latvia	27	67	4.5	61.7	18.1
Lithuania	42	78	3.8	64.0	16.5
<b>Luxembourg</b>	<b>55</b>	<b>253</b>	<b>2.3</b>	<b>30.2</b>	<b>16.4</b>
Malta	11	96	6.4	45.2	15.1
Netherlands	733	128	3.2	43.9	24.3
Poland	466	70	4.6	58.6	17.7
Portugal	193	77	2.7	65.1	17.6
Romania	188	63	6.9	62.6	15.1
Slovakia	85	77	3.4	54.7	19.2
Slovenia	43	85	5.0	52.8	18.3
Spain	1,164	92	3.1	57.7	18.5
Sweden	477	122	2.3	44.1	26.0
United Kingdom	2,324	105	1.8	65.7	18.4
Iceland	21	130	3.6	50.4	23.3
Japan	...	105	...	...	...
Norway	354	150	1.9	44.8	24.0
Switzerland	601	158	1.0	53.7	12.0
United States	...	145	...	...	...

<sup>1</sup> Purchasing Power Standards. Index 100 = EU-28



Prices and finances	Harmonised inflation	Price level index	Social protection expenditures	General government consolid. debt
	2017	2017	2015	2017
	in %	EU-28=100	in % of GDP	in % of GDP
European Union (28 countries)	1.7	100.0	...	...
Austria	2.2	108.3	29.8	78.4
Belgium	2.2	110.7	30.3	103.1
Bulgaria	1.2	48.4	17.9	25.4
Croatia	1.3	67.0	21.1	78.0
Cyprus	0.7	88.5	21.8	97.5
Czech Republic	2.4	69.0	19.0	34.6
Denmark	1.1	141.5	32.3	36.4
Estonia	3.7	78.5	16.4	9.0
Finland	0.8	122.2	31.6	61.4
France	1.2	108.8	33.9	97.0
Germany	1.7	105.0	29.1	64.1
Greece	1.1	84.3	26.4	178.6
Hungary	2.4	62.0	20.0	73.6
Ireland	0.3	125.4	16.3	68.0
Italy	1.3	101.1	29.9	131.8
Latvia	2.9	72.4	14.9	40.1
Lithuania	3.7	64.6	15.5	39.7
<b>Luxembourg</b>	<b>2.1</b>	<b>126.9</b>	<b>22.1</b>	<b>23.0</b>
Malta	1.3	82.3	17.5	50.8
Netherlands	1.3	112.3	30.2	56.7
Poland	1.6	56.2	...	50.6
Portugal	1.6	85.1	25.7	125.7
Romania	1.1	52.2	14.6	35.0
Slovakia	1.4	69.1	18.2	50.9
Slovenia	1.6	85.3	23.8	73.6
Spain	2.0	92.3	24.6	98.3
Sweden	1.9	125.5	29.2	40.6
United Kingdom	2.7	116.6	28.6	87.7
Iceland	-1.7	166.0	22.8	...
Japan	...	105.4	...	...
Norway	1.9	142.7	27.9	...
Switzerland	0.6	159.0	27.3	...
United States	1.7	111.4	...	...

## Our other publications



### Note de conjoncture

Semiannual publication which analyses the short-term situation and prospects of the Luxembourg economy and the international environment in the short term.

ISSN 1019-6463

### Conjoncture flash

Monthly publication on the state of the Luxembourg economy.

Graphs and summary tables with comments on the main economic indicators.





### **Bulletin du STATEC**

This periodical contains survey results and statistics commentaries on specific topics.

ISSN 0076-1583

N° 2/2018

L'éducation des adultes

N° 1/2018

Le tourisme d'hier et d'aujourd'hui:  
Les 20 ans de l'enquête Tourisme

N° 4/2017

La formation professionnelle continue  
dans les entreprises

N° 3/2017

Projections macroéconomiques et démographiques  
de long terme: 2017-2060

N° 2/2017

Indice socio-économique par commune

N° 1/2017

Salaires, emploi et conditions de travail

## Regards...

The aim of this four-page periodical is to publish a preview of the main analysed and commented results of the STATEC surveys. The purpose of this publication is to enhance the efforts of companies and households involved in surveys by giving them easy access to information from these surveys.

ISSN 2304-7127



## Répertoire des entreprises

List of Luxembourgish companies (as of January 1st). Broken down by economic activity, the Directory provides information on the postal address as well as on the existence of secondary activities.

ISBN 978-2-87988-135-5

Also available by request in Excel format  
Price per issue: 14.00 Euros



## Cahiers économiques

This series contains detailed studies on economic or general interest topics.

N° 123

Rapport travail et cohésion sociale 2017  
ISBN 978-2-87988-136-2

N° 122

Un budget de référence pour le Luxembourg  
ISBN 978-2-87988-133-1

## Économie et statistiques

This series contains short studies (working papers) on all disciplines of economic science.

ISSN 2354-4988



## Cross-border collaboration Saar-Lor-Lux-Rhineland-Palatinate-Wallonia

### Statistiques en bref 2016

#### Statistische Kurzinformationen

Short description and basic statistics of the economic and social development structure of the five partners of the Greater Region.

Bilingual edition, december 2016

### Conjuncture dans la Grande Région

#### Konjunktur in der Großregion

This quarterly publication describes recent economic development in the cross-border region, using a variety of short-term economic indicators.

### Grande Région: Dernières nouvelles

#### Großregion: Statistik aktuell

At irregular intervals, it highlights a theme which concerns the five territories of the Greater Region.

"Greater Region" publications are presented and downloadable on the website  
[www.grande-region.lu](http://www.grande-region.lu) / [www.gross-region.lu](http://www.gross-region.lu)



# STATEC

Institut national de la statistique  
et des études économiques

---

Centre Administratif Pierre Werner  
13, rue Erasme  
B.P. 304  
L-2013 Luxembourg

+352 247-84219  
[info@statec.etat.lu](mailto:info@statec.etat.lu)  
[www.statec.lu](http://www.statec.lu)

September 2018  
ISSN 1019-6448x

Reproduction only authorized if the source is mentioned.

Photo de couverture: Weho/Shutterstock.com  
Printing: Imprimerie Centrale, Luxembourg